



SCREENING CHAPTER 16 TAXATION

AGENDA ITEM: COMPUTERISATION

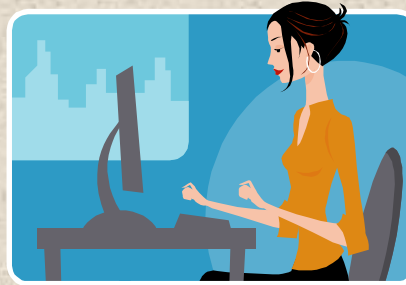
**Country Session: The Republic of TURKEY
11-12 July 2006**

CONTENTS

- VEDOP (Tax Office Automation Project)
- Citizen ID – Tax ID
- e-Declaration
- Electronic Bank Collection Processing System (EBTİS)
- Call Center
- Internet Tax Office
- Components of Information Society
- Security Infrastructure
- Data Exchange Infrastructure
- Management Information System (MIS)
- Human Resources
- Ongoing Projects

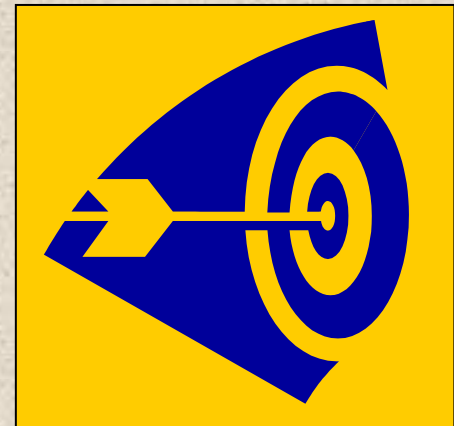
VEDOP

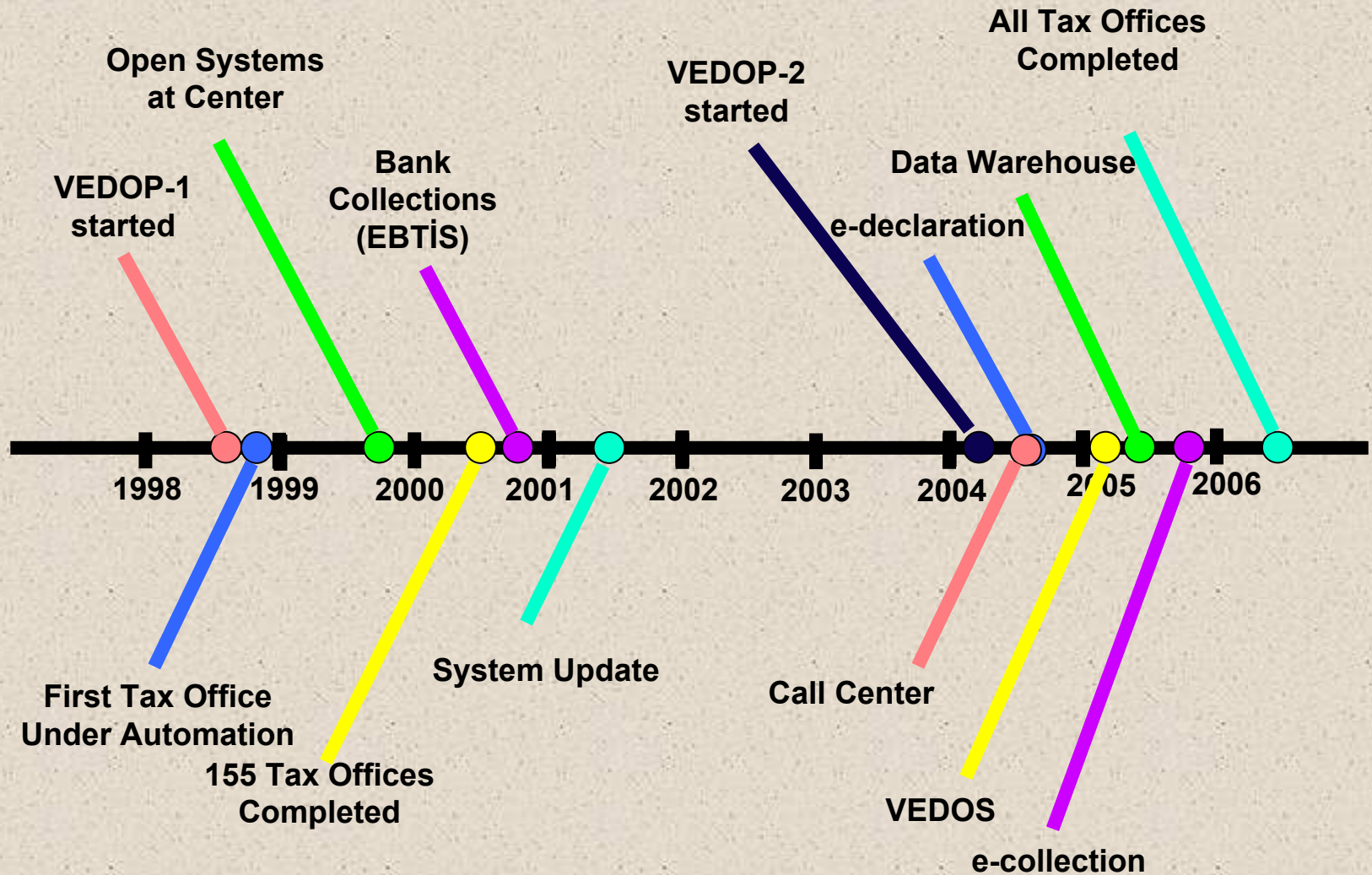
Automation of Tax Offices



OBJECTIVES

- Full Automation
- Efficient and Effective Administration
- Taxpayer Oriented Services
- Increasing the Productivity
- Fight Against Unregistered Economy
- Tax Returns via Internet
- Tax Collection via Banks
- Data Exchange with Other Institutions





VEDOP with Numbers

Tax Offices	448
Tax Auditing Units	74
Unix Servers	56
Servers (Intel Based)	566
PCs	19,204
Matrix Printers	7,277
Passbook Printers	3,471
Laser Printers	2,418
Barcode Readers	1,588
Routers	485
Ethernet Switch	1,142





Tax Office Structures

Automated Tax Offices	
e-VDO	147
VEDOP	301
Total Tax Offices	448

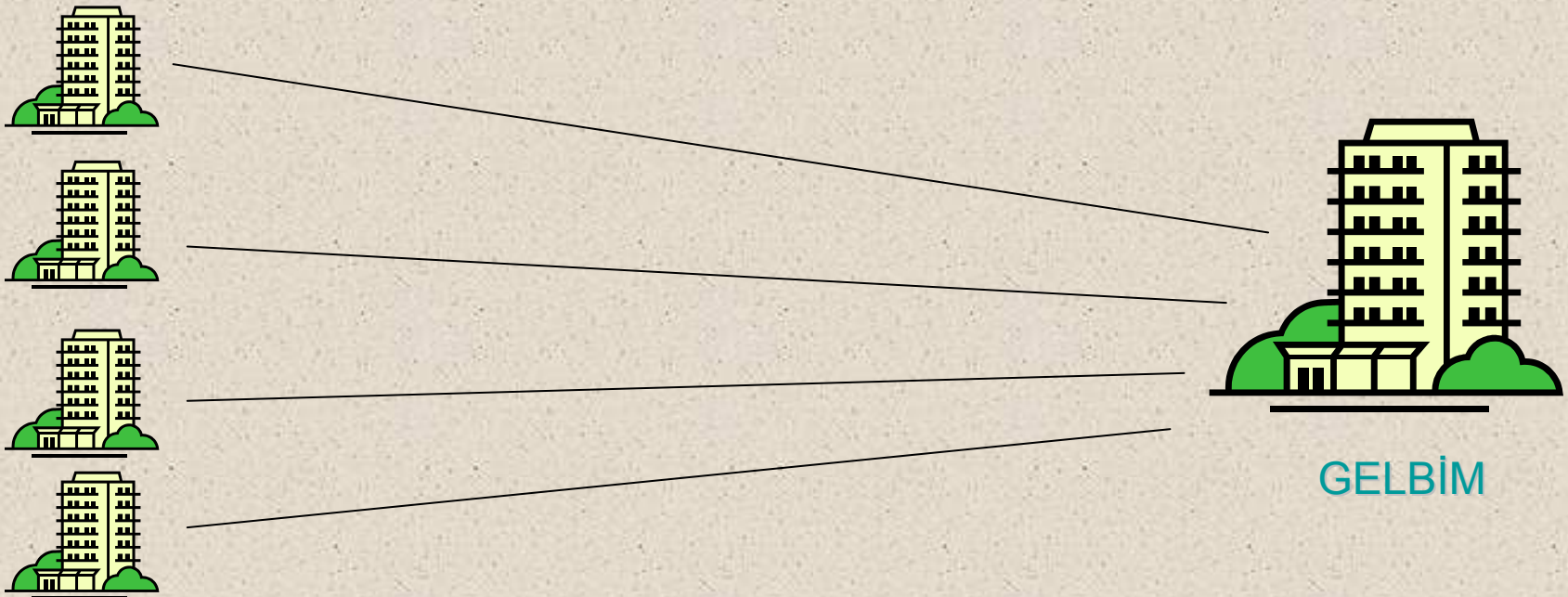
Accounting Offices to be Automated	
Number of Accounting Offices	585
Percentage of Accrual in Total	1.89 %



Tax Office Structures

e-VDO : Web Based Application

147 Tax Offices



Online Applications



Tax Office Structures

WDO : Client-Server Architecture

301 Tax Offices

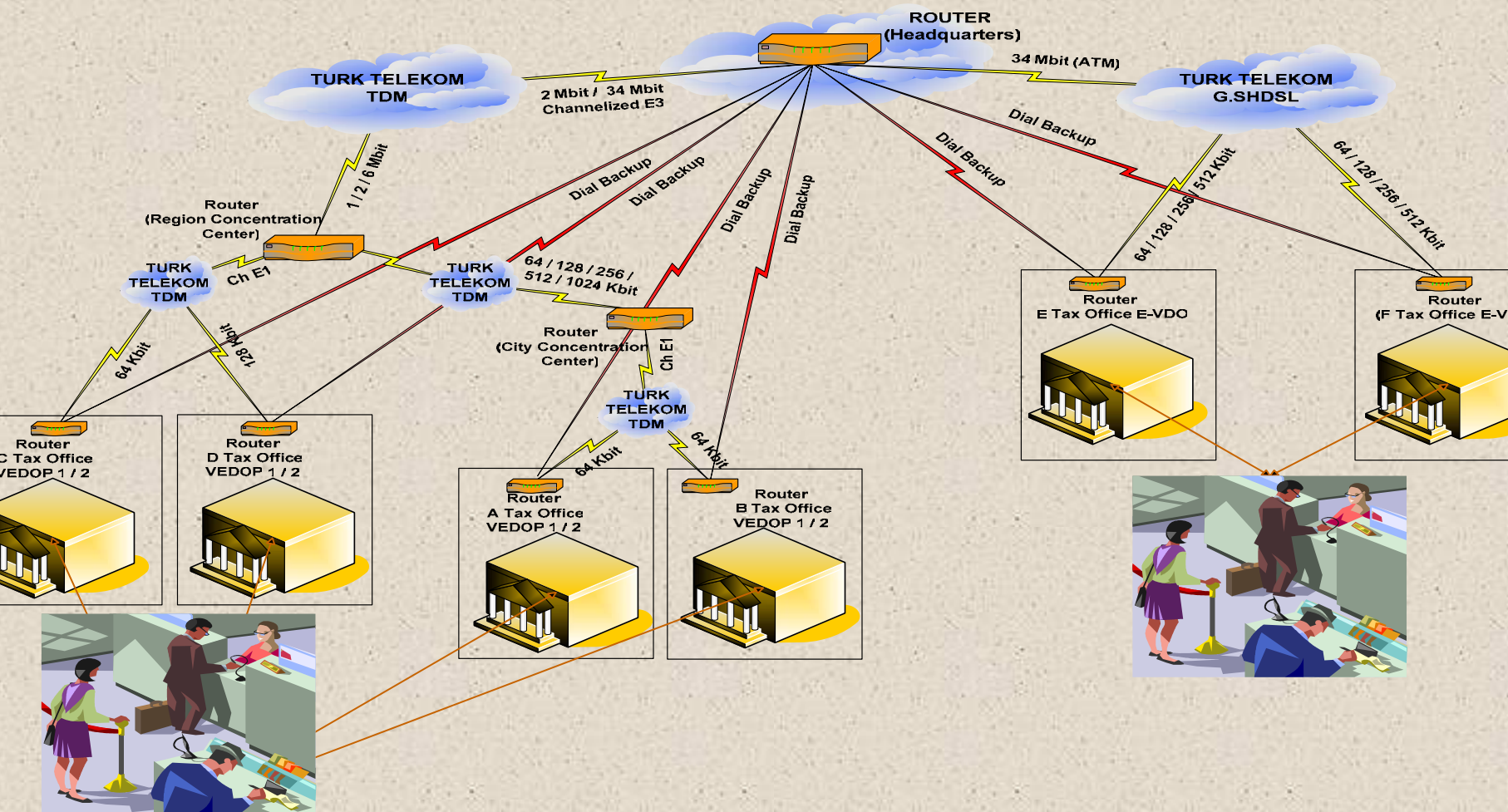


GELBİM

Local Database in Working Hours
(Near Online)

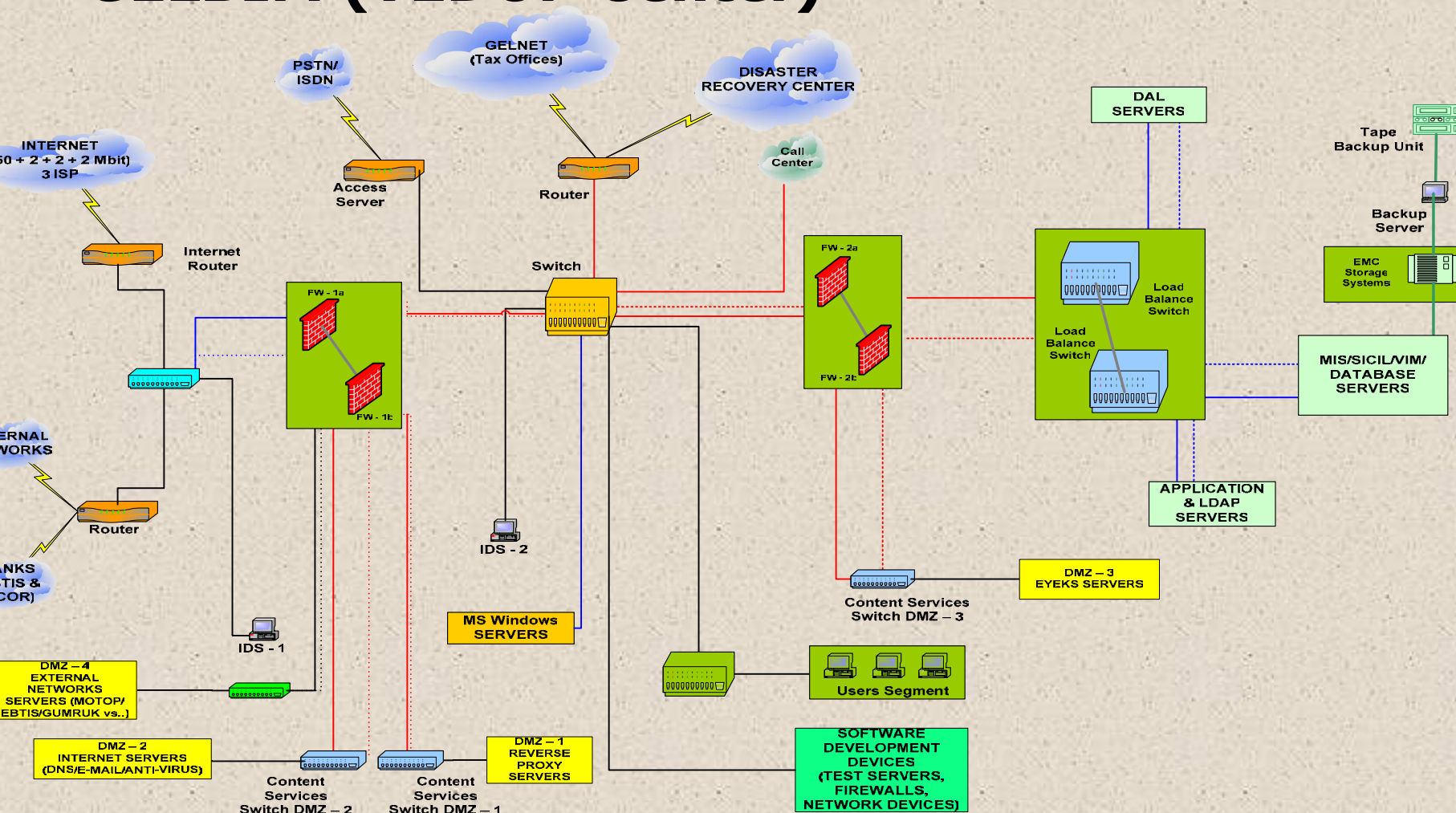
End of the Day
Consolidation
With Center

GELNET (VEDOP Intranet)



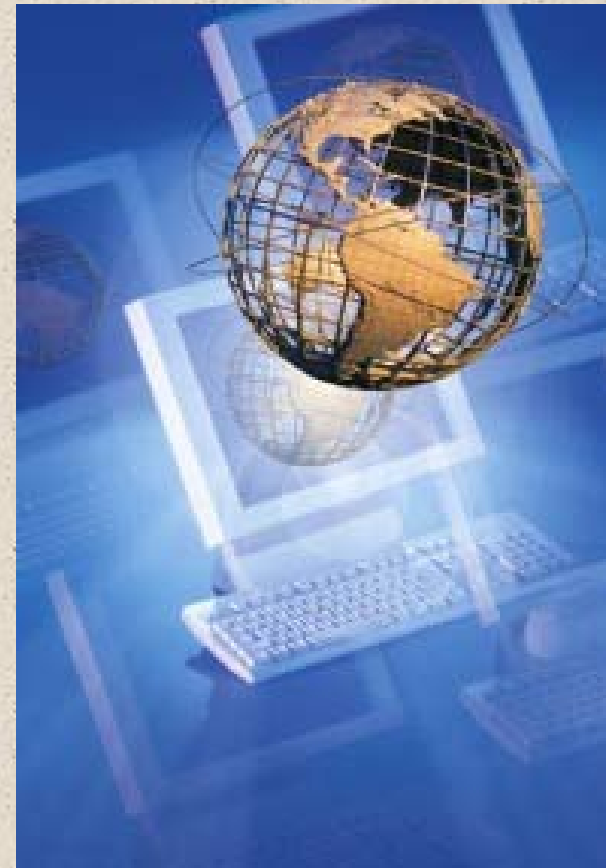


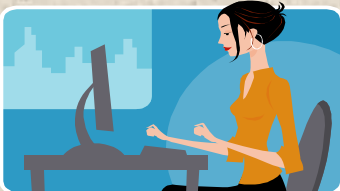
GELBİM (VEDOP Center)



- **Unix Servers with Solaris 9**
- **Sybase ASE 12.5.2 Database**
- **Sun One Application Server**
- **Sybase IQ 12.5 Data Warehouse**
- **Business Objects Data Integrator ETL and Infoview Reporting Tools**
- **CA Unicenter System Management**
- **WEB based software development with JAVA**
- **Data Exchange with XML**
- **TCP/IP based Communication Network**

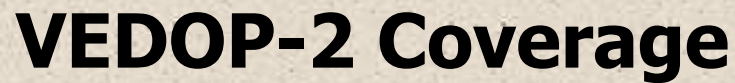
VEDOP Infrastructure





VEDOP-1 Coverage





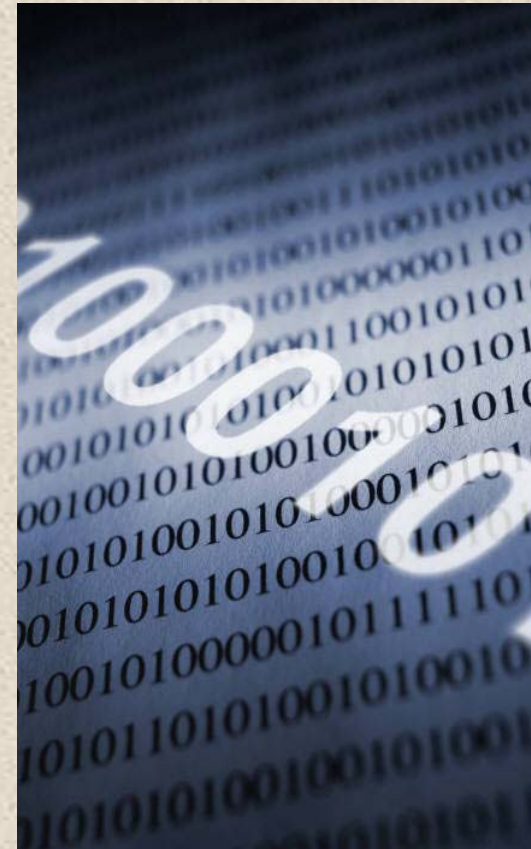
Citizen ID – Tax ID

- All Tax Payers (Companies and Individuals) have a ten digit Tax ID

1234567890

- After the realization of MERNIS all citizens have been provided an eleven digit Citizen ID

12345678901



Citizen ID – Tax ID

- The works concerning realisation of the all taxation transactions of real persons with Citizen ID is about to be completed.
- In two years, all public institutions will be using Citizen ID for all the transactions.



MERNİS Project – Citizen ID

- MERNİS (Central Population Management System) is held by the Directorate General of Population and Citizenship Affairs of the Ministry of Interior.
- Alive or dead 122.145.860 individuals have been given a unique Citizen ID and all the information has been transferred to electronic form.
- All local population offices are connected online via intranet.
- The Identification Information Sharing System is established among public institutions.

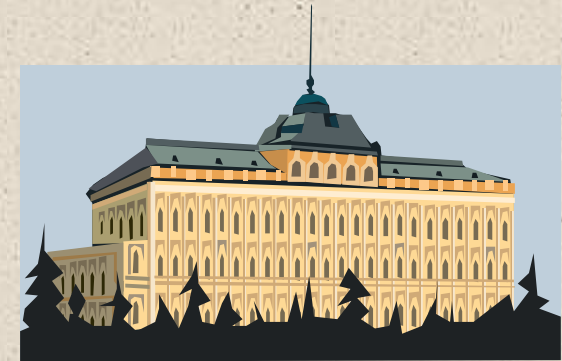
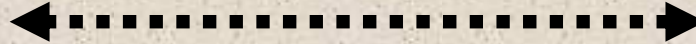


Data Exchange with MERNİS



Tax Office

Data Exchange



MERNİS Center

Citizen ID	12345678901
Name	Mehmet
Last Name	Atuğ
Place of Birth	Aksaray
Date of Birth	05.05.1965

e-Declaration

- Transformation of tax offices (from operational units to specialization units by minimising their workload)
- Fast and precise accruals
- Storing declarations electronically (No archives, no files)
- No need to visit tax offices
- Collecting information for Data Warehouse (Balance sheet, income tables, all other forms)



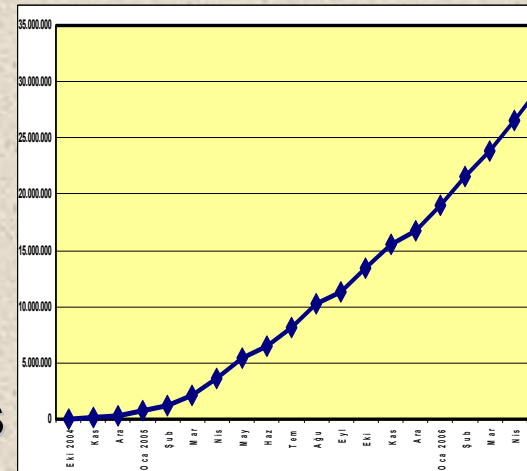
e-Declaration

- Turkey's biggest portal with 2,500,000 tax payers
- Saving 6,000 tons of paper annually (2.5 million €/year)
- Saving 14,000 man-month annually (3.4 million €/year)



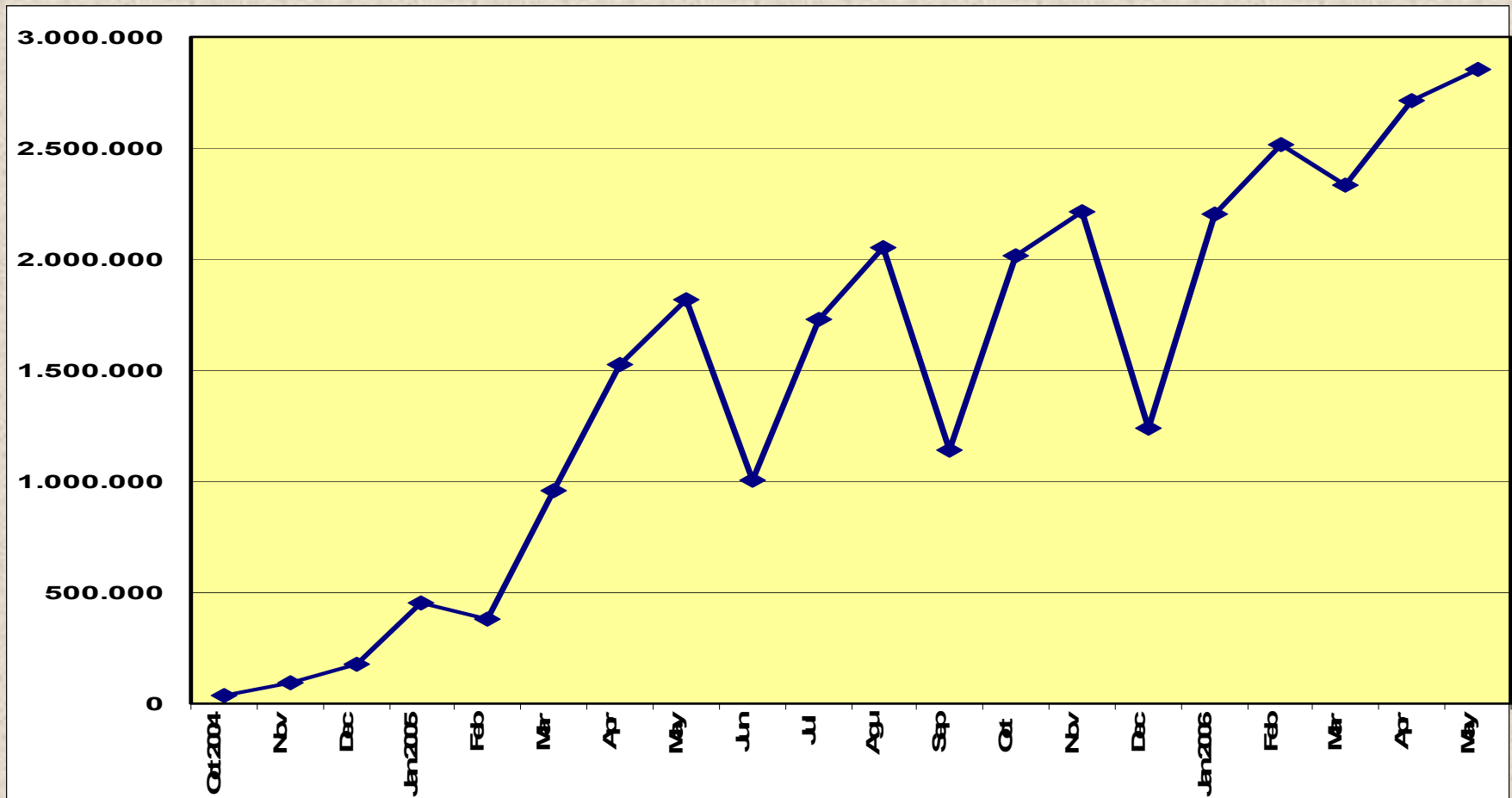
e-Declaration

- Started in October 2004
- Widely accepted in a very short time period by the taxpayers
- Usage ratio is continuously increasing
- 25 different type of declaration and appendices can be sent as e-declaration via Internet
- Username-password pair is being used for authentication
- Infrastructure is ready for Digital Signature



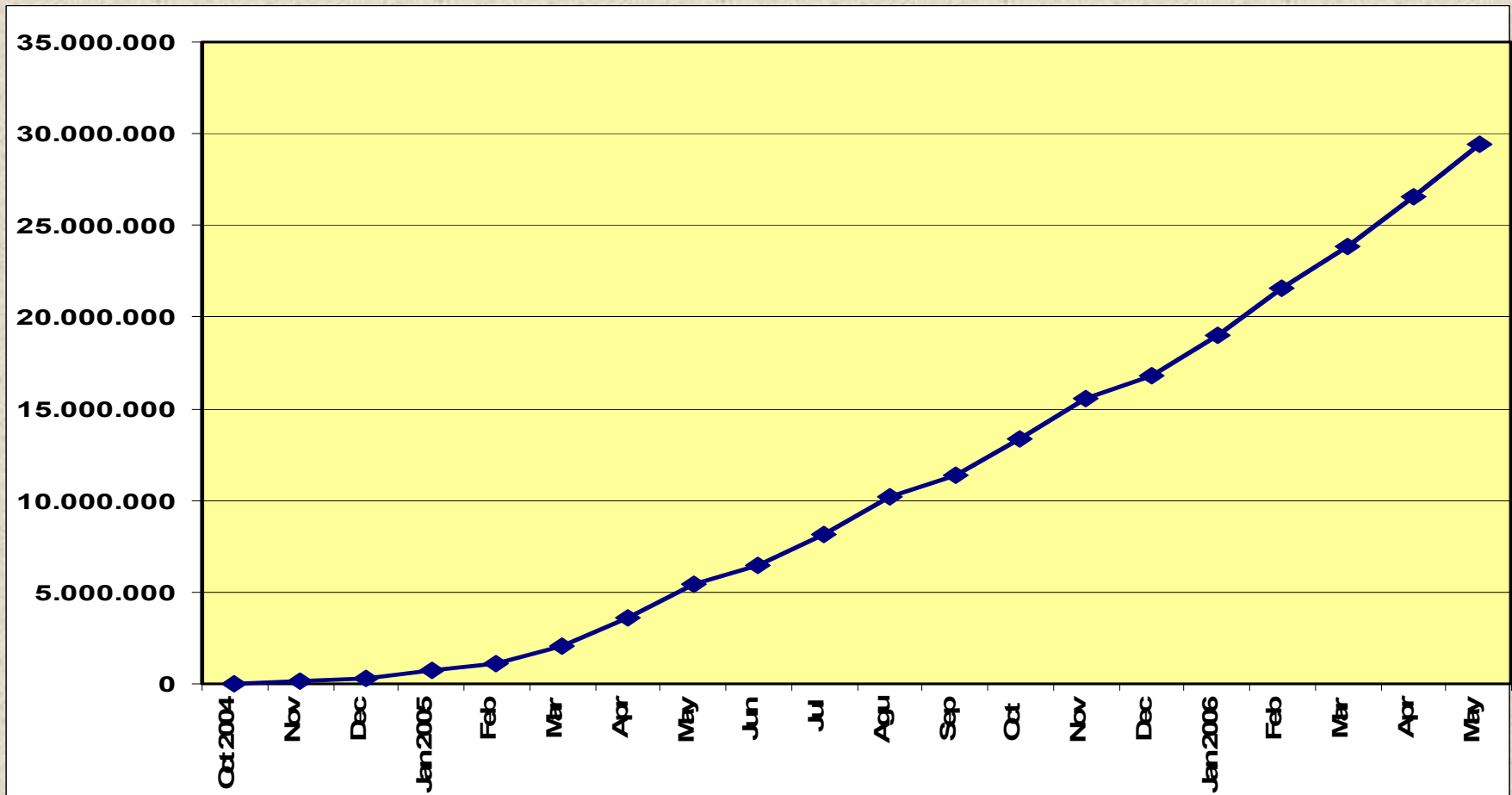


Monthly e-declaration Numbers

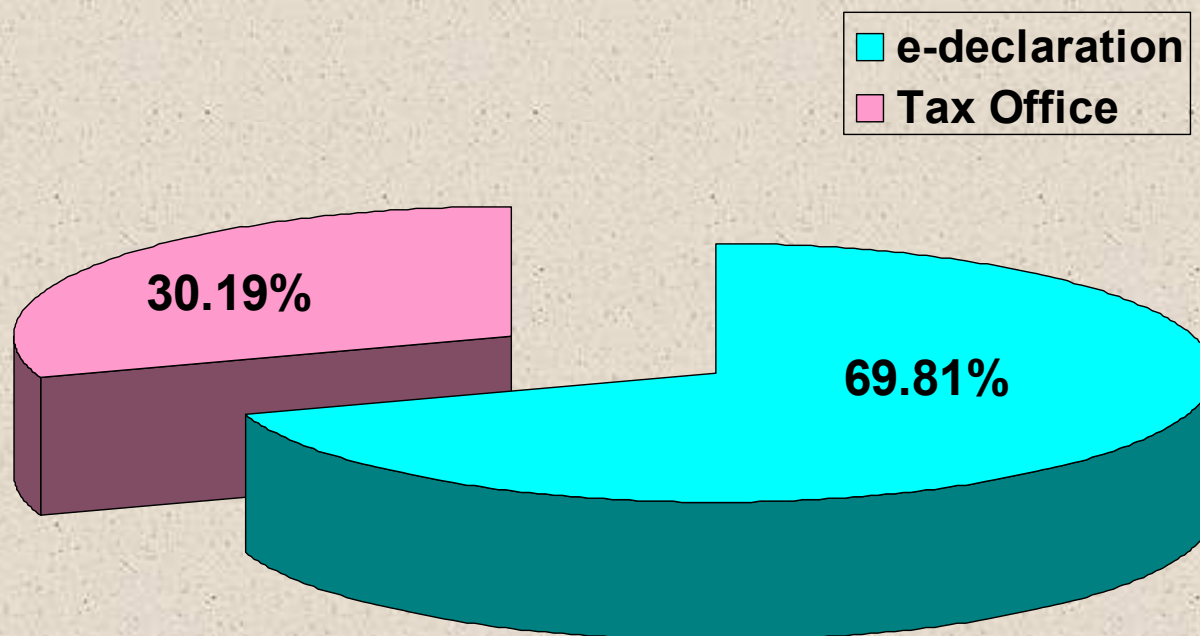




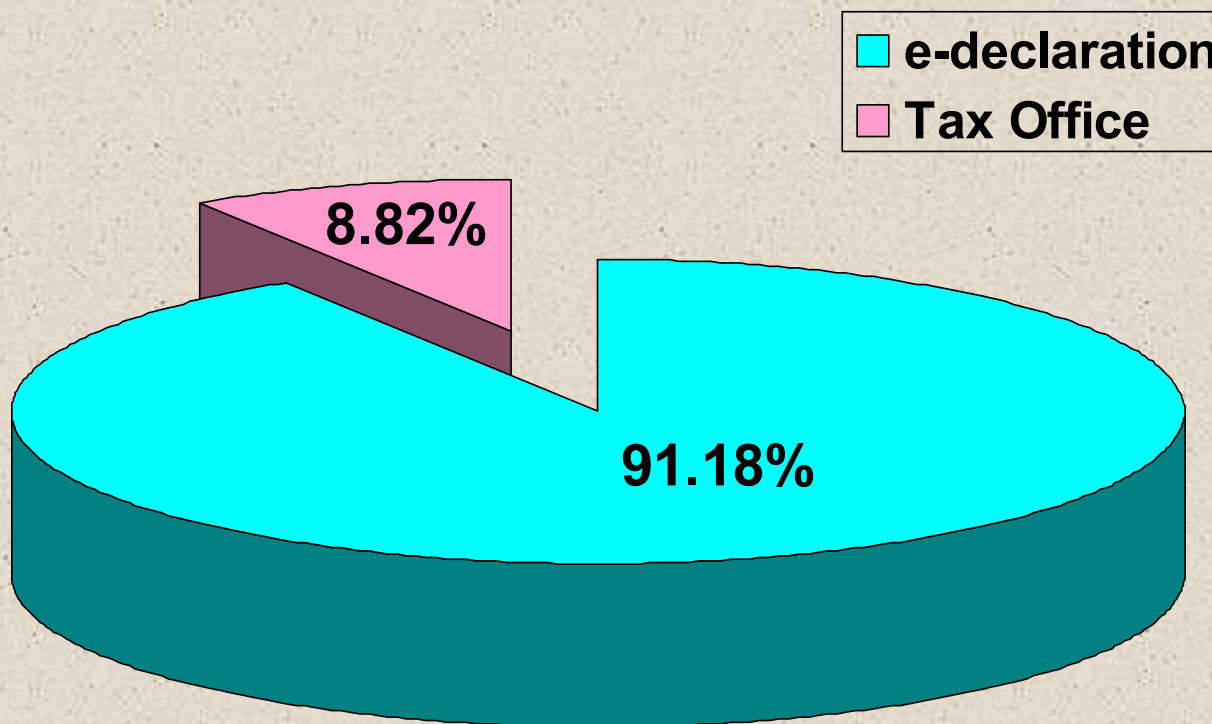
Total e-declaration Numbers



2006 Income Tax Ratios

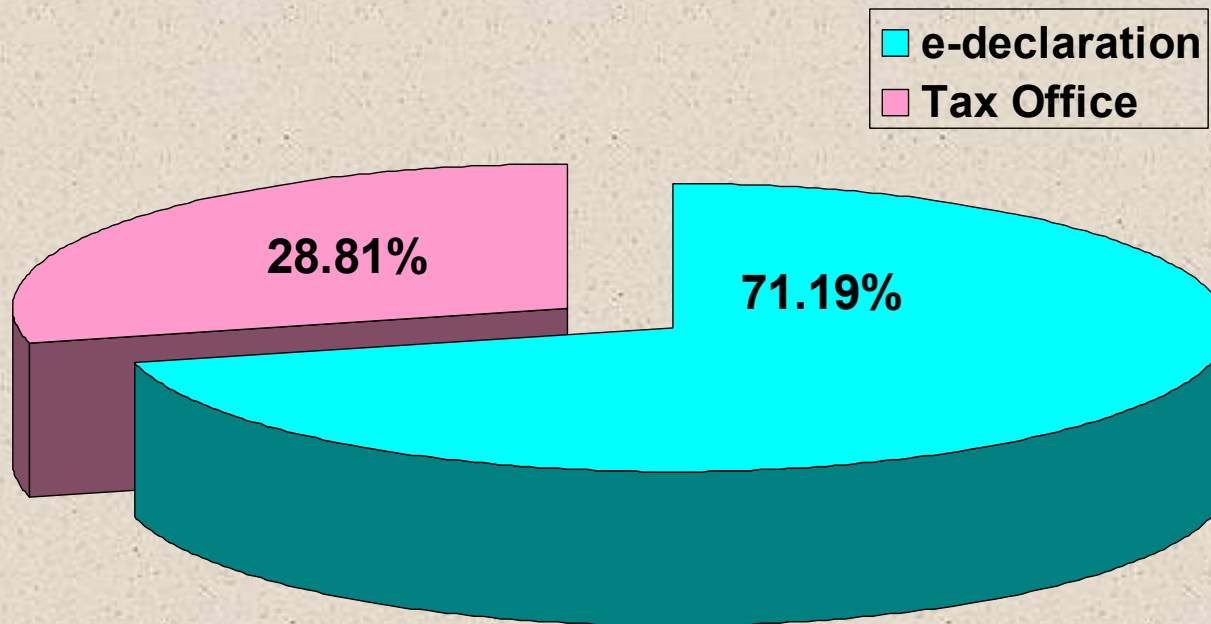


2006 Corporate Tax Ratios

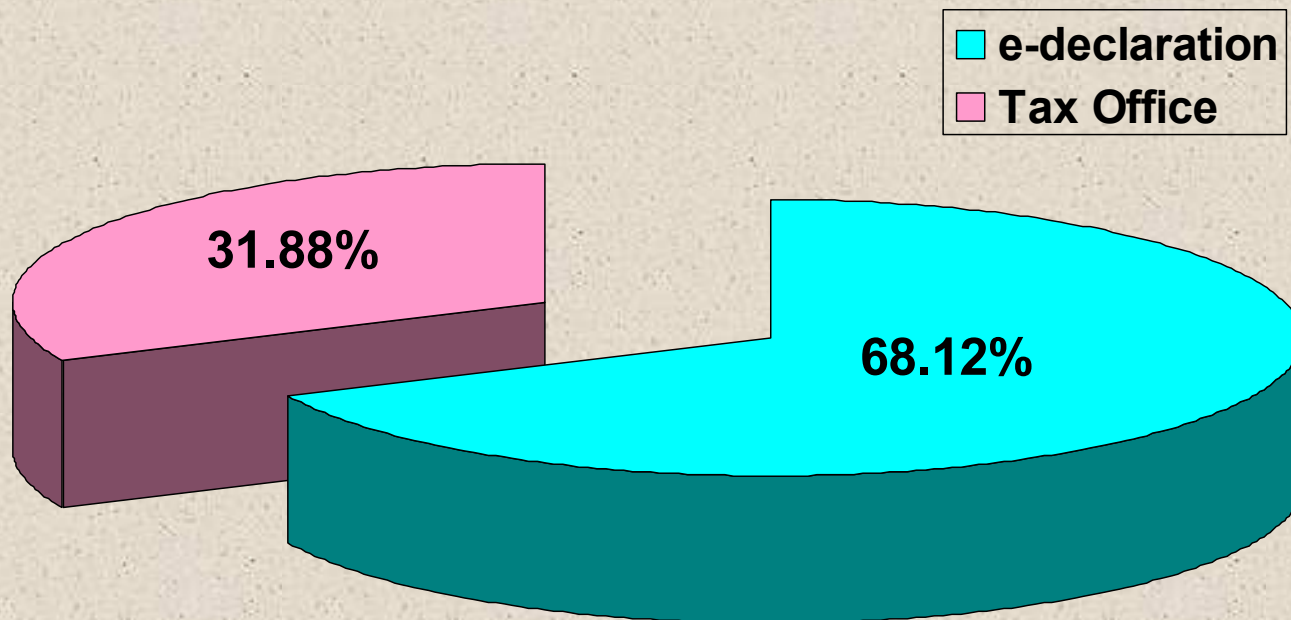




VAT Ratios



Withholding Tax Ratios



e-Declaration Capacities



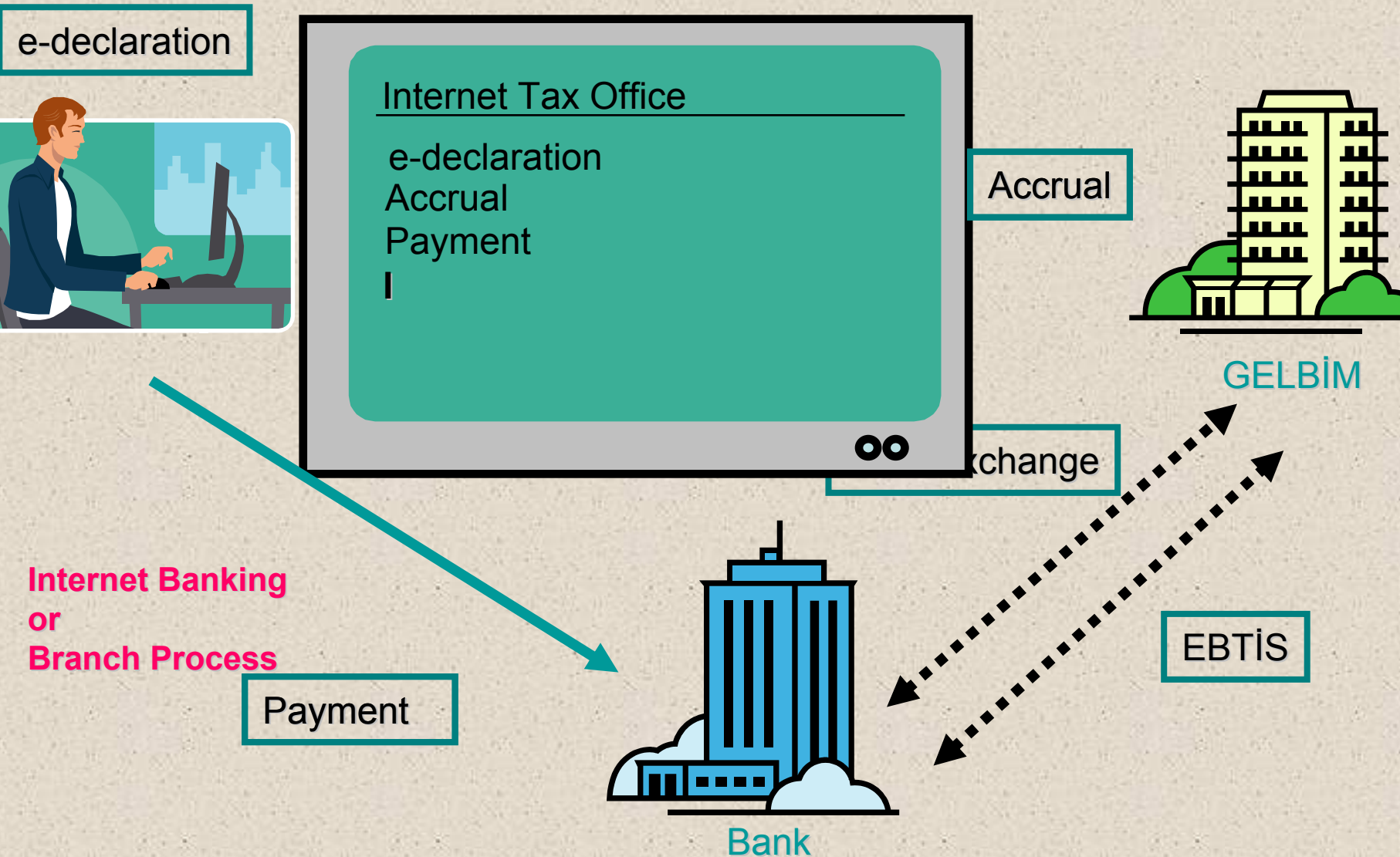
- Hourly
 - Maximum taken : 90,000
 - Maximum capacity : 200,000



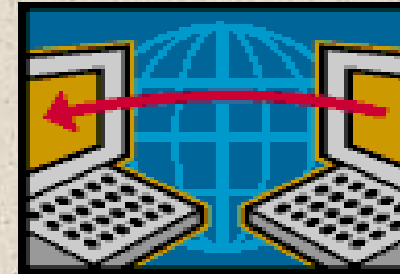
- Daily
 - Maximum taken : 650,000
 - Maximum capacity : 4,800,000



SCREENING CHAPTER 16
TAXATION
AGENDA ITEM : COMPUTERISATION



EBTİS



Electronic Bank Collection Processing System

- e-Collection allows the banks to monitor and pay tax payer's debt to the tax office.
- EBTİS process the offline collections from banks.

Tahsilat İşleme İşleme Sonuç Özeti Önceden İşlenenler Listesi

Kütük Bilgileri

Bankalar :

	Banka	Tahsilat Tarihi	Geçerli Fiş Sayısı	İptal Fiş Sayısı	Durum
1	00099 OYAKBANK A.Ş.	12.05.2006	3	0	YARIM
2	00010 T.C. ZIRAAT BANKASI	17.01.2006	47	0	BAŞLANMAMIŞ
3	00012 T.HALK BANKASI A.Ş.	17.01.2006	63	1	BAŞLANMAMIŞ
4	00015 T.VAKIFLAR BANKASI T.A.O.	17.01.2006	5	0	BAŞLANMAMIŞ
5	00046 AKBANK T.A.Ş.	17.01.2006	2	0	BAŞLANMAMIŞ
6	00059 ŞEKERBANK T.A.Ş.	17.01.2006	3	0	BAŞLANMAMIŞ
7	00062 T.GARANTİ BANKASI A.Ş.	17.01.2006	1	0	BAŞLANMAMIŞ
8	00064 TÜRKİYE İŞ BANKASI A.Ş.	17.01.2006	7	0	BAŞLANMAMIŞ
9	00099 OYAKBANK A.Ş.	17.01.2006	9	1	BAŞLANMAMIŞ

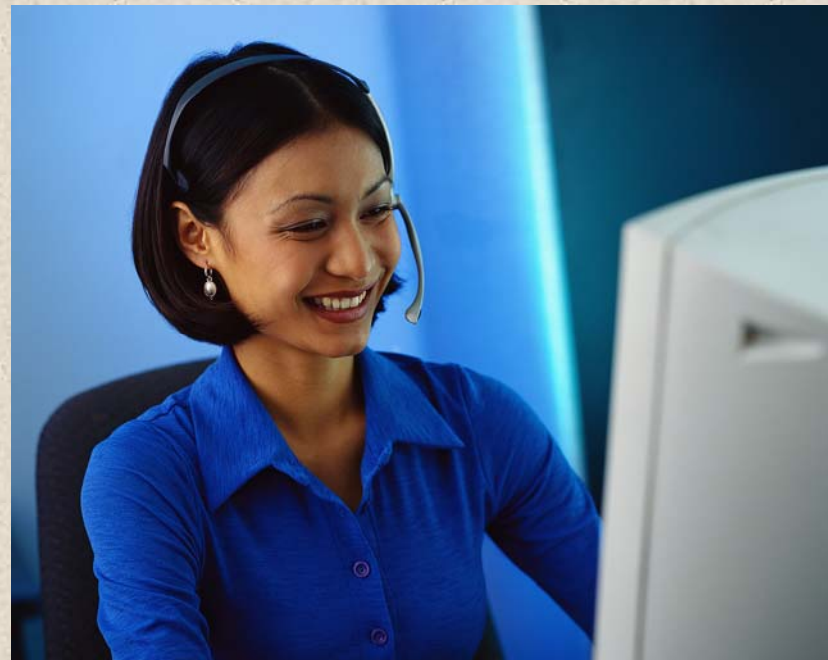
Tahsilatı Kaldır Tahsilatı İşle Durum Güncelle

Kaydet Temizle Yazgeç Yazdır Yardım GİB

006205 Vdos Gorev TEST_POLATLI15 12

Call Center

- First call center application in public sector
- Continuous support for e-declaration
- Any kind of support for solving tax payer's problems



Internet Tax Office

Data from EBTIS and e-declarations are the inputs for the system

- Accruals, collections, debt information of due and undue dates and delay raise -if exists- can be queried online
- Reminder service can inform the taxpayers for their duties fifteen days in advance



- Tanıtım
- Mevzuat
- Yeni
- İnternet Vergi Dairesi
- Etkinlikler
- Formlar ve Yayınlar
- Duyurular ve Haberler
- İnteraktif Eğitim
- Mükellef Hizmetleri
- Ankara OECD Vergi Merkezi
- Vergi İstatistikleri
- Y. Vergisel Teşvikler
- Bağlantılar
- Taslaklar

Sık Kullanılanlar

- Sıkça Sorulan Sorular
- Güncel KDV Oranları
- e-Beyanname
- e-Posta Bilgilendirme
- Motorlu Taşıt Sorgulaması
- Y. Dışı Çıkış Yasağı Sorgulama
- Vergi Kimlik Numarası Sorgulama

İnternet Vergi Dairesi

İnternet Vergi Dairesi'ne Hoş Geldiniz.

Lütfen bir işlem seçiniz Lütfen bir işlem seçiniz Lütfen bir işlem seçiniz Lütfen bir işlem seçiniz...

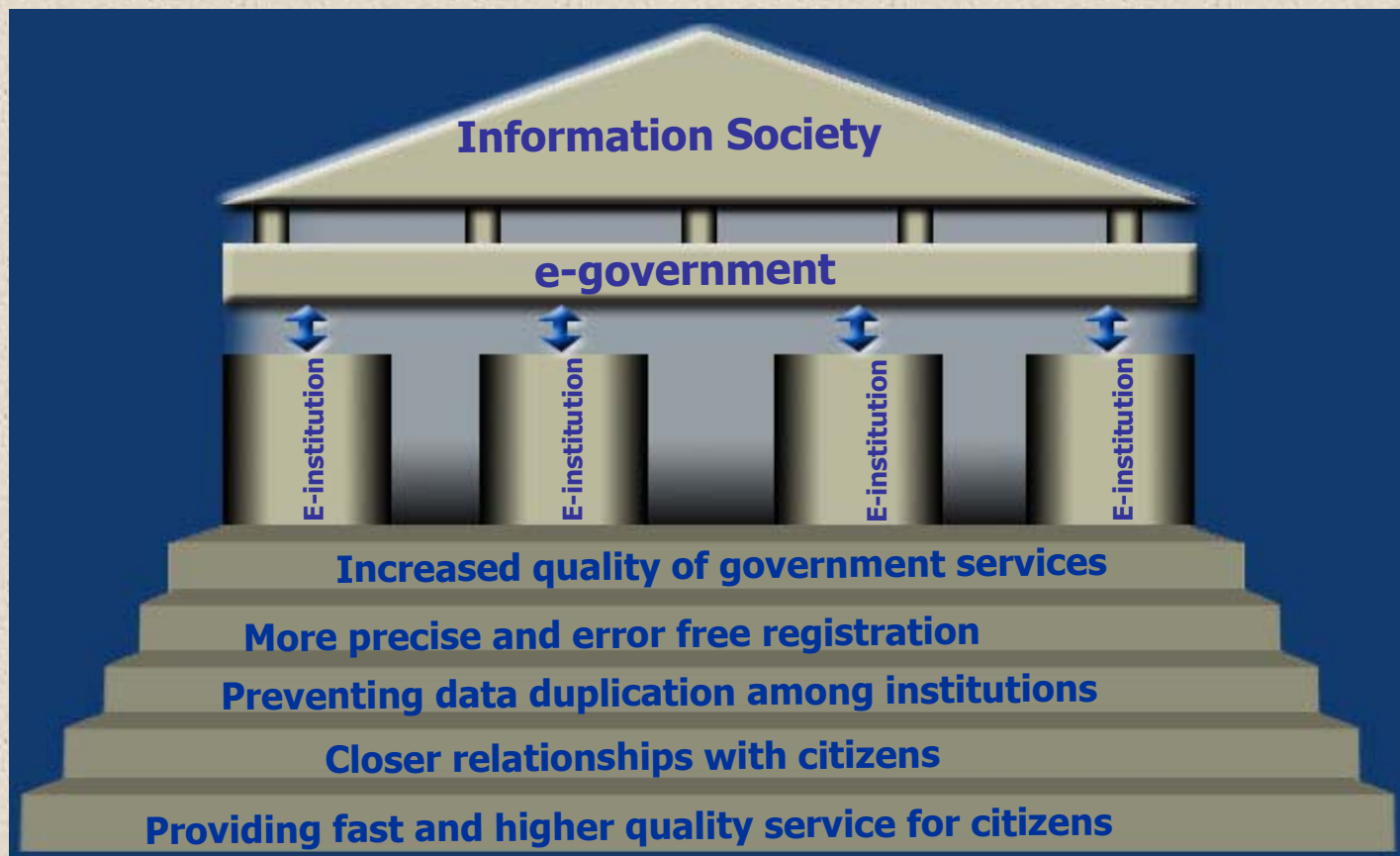
- E-Beyanname
- Btrans
- Kurumlar Vergi Dairesi
- Gelir Vergi Dairesi
- Vergi Kimlik Numarası Sorgulama
- Gecikme Faizi Hesaplama
- Gelir Vergisi Hesaplama
- Motorlu Taşıtlar Vergisi Hesaplama
- Motorlu Taşıt Sorgulaması
- Kasko Değerleri
- Yurt Dışı Çıkış Yasağı Sorgulama

Internet Tax Office

- Taxpayers spend less time to follow their information without visiting tax offices and spending less time at tax offices
- All the information which was difficult to receive directly from tax office is available from Internet Tax Office
- Taxpayers can monitor and control the related transactions



Components of Information Society



e-institution

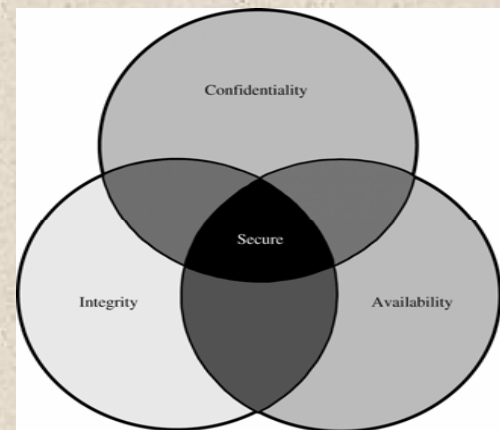
- Integrated information system
- Transferring the institutional data to electronic media
- Decision Support and Management Information Systems
- Communication infrastructure : Intranet
- Personnel with computer literacy

e-government

- Interoperability with other institutions' systems
- Citizen oriented
- Institutional portal

Basic Components of Information Security

- **Confidentiality** :Securing data and resources
- **Integrity**: Preventing the data to be changed by unauthorised users during the storage and transmission via electronic media
- **Availability**: Continious provision of services to authorized users



Security Infrastructure



- Securing proper usage of confidential data concerning taxpayers.
- While restricting unauthorized access, allowing the authenticated users.
- Providing infrastructure for secure data exchange among institutions.



Security Infrastructure

Technical Measures

- Firewall
- IDS & IPS
 - Network and host based
- Antivirus system
- E-mail firewall
- Content filtering



Security Infrastructure

Technical Measures

- Proxy (web access)
- Reverse proxy (for external applications)
- SSL accelerators
- Physical security
 - Smartcard based access control
 - CCTV
 - Fire alarms and extinguishing system
- Server certificate (web site ID verification)



Security Infrastructure

Managerial Measures

- Information Security Policy Document
- Information Security Operational Procedures
- Information Security Risk Audits
- Information Security Tests
- Information Security Personnel



Data Exchange Infrastructure

	Technology	Examples
Data Description Language	XML	Emkas, e-declaration, Btrans
Metadata Description Language	XSD	Emkas, e-declaration, Btrans
Data Transfer	XSL	Emkas, e-declaration, Btrans
Data Design Language	UML	All Applications
Data Standards	GovTalk processes	Turkish Police and MERNIS
XML Digital Signature	XML-Signature Syntax and Processing (XMLsig) as defined by W3C	Digital Signature Law and Legislations
XML Cryptography	Decryption Transform for XML Signature as defined by W3C	Digital Signature Law and Legislations
XML PKI	XML-Key Management Specification (XKMS 2.0) as defined by W3C	Digital Signature Law and Legislations
XML Authorization and authentication	SAML	Eyeks
XML Access Control	XACML	Eyeks

MIS

Management Information System

Management and auditors have access to taxpayer related information

- payments
- accruals
- follow-up files
- declarations
- address and corporate information
- legislation



MIS

Management Information System



- Monitoring transactions of the tax offices (collections in certain periods)
- Examining all the data under automation

VEDOP
MERKEZİ SORGULAMALARI

MÜKELLEFİN BAĞLI OLDUĞU VERGİ DAİRESİ BAZINDA SORGULAMA

- [Performans Derecelendirme Bildirimi Görüntüleme](#)
- [Form BA BS Analizi](#)
- [Belge Basım Bilgileri Görüntüleme](#)
- [347 No'lu Tebliğ Uyarınca İnternette Girisi Yapılan Belgelerin Görüntüleme Ekranı](#)
- [Toplam Bazında Tahakkuk Sorgulama](#) (Eski Otomasyon bilgileri dahildir)
- [Toplam Bazında Tahakkuk Sorgulama](#) (Eski Otomasyon bilgileri dahildir)
- [Tahakkuk Sorgulama](#)
- [KDV İade Sorgulama](#)
- [Muhtasar Vergi Sorgulama](#)
- [Tahsilat Sorgulama](#)
- [Özel Tüketim Vergisi Bildirimi Sorgulama](#)
- [Takdire-Sevk Sorgulama](#)
- [Tarhiyat Sorgulama](#)
- [Beyana Çağrı Sorgulama](#)

Human Resources

Personnel

Manager	14
Engineer	2
Programmer	67
Data input operators	250
Other	149



Outsourced Services

Engineer	60
Technical Personnel	122

VIES - VAT Information Exchange System

- Data exchange with XML
- TCP/IP based data communication infrastructure
- WEB based software development with JAVA
- Data Exchange with MERNİS, banks and other institutions



Ongoing Projects

- Business continuity
- Disaster Recovery Center
- Widening web based application
- Automation of Accounting Offices
- Call center infrastructure for all services
- Voice over IP application
- Video conference infrastructure
- e-learning system

