



**European Commission**

Directorate-General for Energy and Transport

Unit G3 – Motorways of the Sea & Intermodality

# **Screening of the Transport Chapter Brussels, 28 June 2006**

**Directive 2002/6/EC  
of the European Parliament and of the Council  
of 18 February 2002  
on reporting formalities for ships arriving in and/or  
departing from ports of the Member States of the  
Community**

***Patrick Norroy***

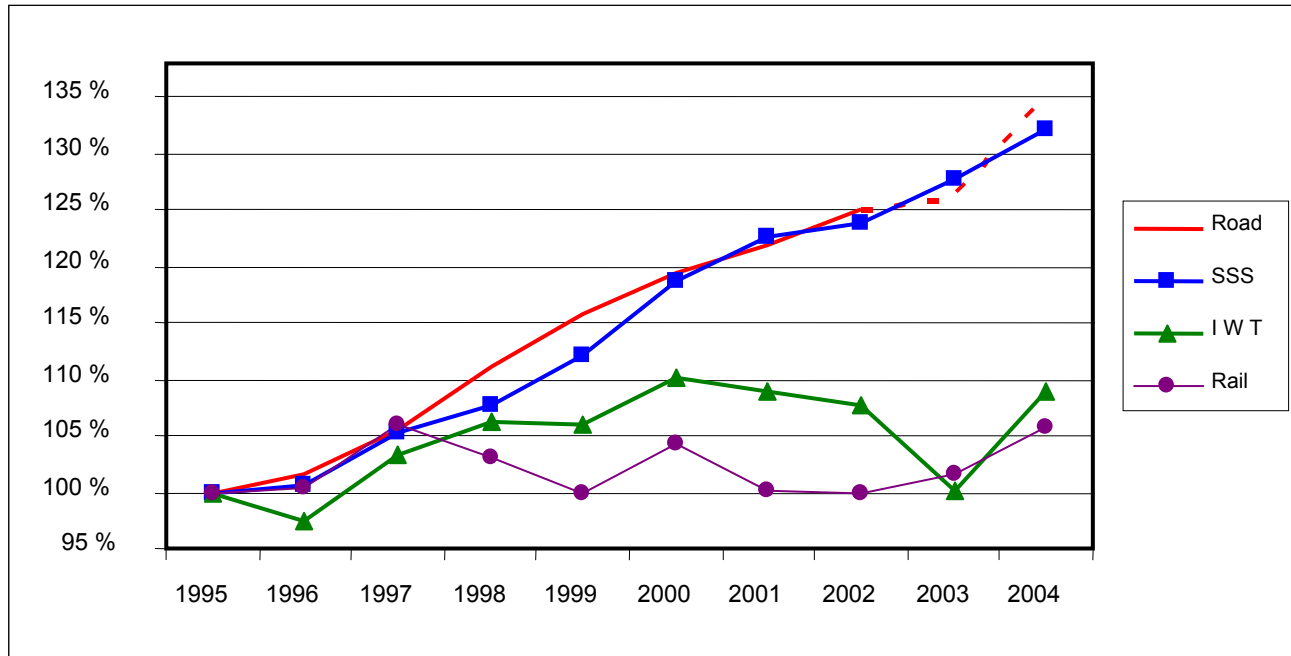
**Unit Motorways of the Sea and Intermodality**

**Directorate General Transport and Energy**

**European Commission**



# Background : Importance of Short Sea Shipping in EU transport



**Tonne-kilometre growth 1995-2004 - Source:  
Eurostat and 75 member ports of the European Sea Ports  
Organisation (ESPO)**



## **Background : promotion of Short Sea Shipping**

- **The 1999 Commission Communication on short sea shipping (COM(1999) 317 final) considered that the complexity of administrative and documentary procedures constitutes an obstacle to the development of the mode.**
- **One particular example mentioned was the ships' arrival and departure forms which are frequently based on international IMO FAL models (International Maritime Organisation's Convention on Facilitation of Maritime Transport).**



## **Requirements of Directive 2002/6/EC**

- **Directive 2002/6/EC establishes the list of reporting formalities in respect of ships arriving in and/or departing from ports of the Member States**
- **It gives the list of authorised signatories of the related documents**
- **It provides a format for the documents and describes the authorised transmission means**



## **Model Forms**

- **Five basic IMO FAL documents for ships' arrival and departure are covered:**
- **1) General Declaration**
- **2) Ship's Stores Declaration**
- **3) Crew's Effects Declaration**
- **4) Crew List**
- **5) Passenger List, for ships certified to carry 12 passengers or fewer**



## **Implementation**

- **Member States shall recognise and accept documents in their standard model format from 9 September 2003 (EU15) or 1 May 2004 (EU10)**
- **Member States shall accept the amount of information as sufficient for the ships to have fulfilled the routine formalities concerned**



## **Further Steps: 2006 Communication on Short Sea Shipping**

- **The Commission will adopt soon a Communication containing a Mid-Term Review of the 2003 Programme for the Promotion of Short Sea Shipping which should include new or retargeted measures:**
- **IMO/FAL, Motorways of the Sea (make them operational and introduce quality label, SPC>inland intermodality), image (>full logistics integration)**



## **Further Step: Common European Maritime Area**

- **Future developments, such as satellite communications will have beneficial effects.**
- **This is particularly important for short-sea shipping where a ship sailing between two Member States leaves the EU Customs territory each time it leaves a port to re-enter that territory in the destination port.**
- **The Commission plans to launch a wider debate.**





**European Commission**

Directorate-General for Energy and Transport

Unit G3 – Motorways of the Sea & Intermodality

**THANK YOU**

**Patrick Norroy**

**Directorate General for Energy and Transport**

**[http://europa.eu.int/comm/transport/intermodality/motorways\\_sea/index\\_en.htm](http://europa.eu.int/comm/transport/intermodality/motorways_sea/index_en.htm)**

**Telephone: + 32 2 296 25 27**

**Fax: + 32 2 296 37 65**

**e-mail: [patrick.norroy@ec.europa.eu](mailto:patrick.norroy@ec.europa.eu)**