

## SHEEP AND GOAT MEAT

### Non-exhaustive list of issues and questions to facilitate preparations for bilateral meetings

## TURKEY

### 1. General situation of the sector

	2002	2003	2004 <sup>1</sup>	2005 (f)
<b>Production:</b>				
Total size of the flock:				
Sheep	25,174,000	25,431,000	25,201,155	n/a
Goat	6,780,000	6,777,000	6,609,937	
Number of breeding ewes:	n/a	n/a	n/a	n/a
Production of meat (tons) <sup>2</sup> : total	91,282	74,493	80,015	n/a
Sheep Meat	75,828	63,006	69,715	n/a
Goat Meat	15,454	11,487	10,300	n/a
<b>Imports<sup>4</sup></b>				
Live (head)	0	0	0	0
Live (tons/carcass equivalent)	0	0	0	0
Meat (tons)	1	0	1	n/a
<b>Exports<sup>4</sup></b>				
Live (head) total	320,712	30,496	22,980	0
Sheep	297,090	30,496	22,980	0
Goat	23,622	0	0	0
Live (tons/carcass equivalent)	17,656	1,855	1,301	0
Meat (tons)	14	7	27	40
<b>Consumption (tons, total):</b>	n/a	n/a	n/a	n/a
<b>Price (specify currency)<sup>3</sup>:</b>	5,486,736	8,192,600	8,634,168	
(Standard quality lamb carcase. Standard quality of fresh or chilled sheep carcasses are defined as being "lamb of less than one year old at slaughter of acceptable fat level with a carcass weight or estimated carcass weight of at least 12 kg)	TL/kg 3.84 €/kg	TL/kg 4.86 €/kg	TL/kg 4.89 €/kg	

(<sup>1</sup>) The figures for year 2004 are provisional figures, Turkish Statistics Institute (TURKSAT).

(<sup>2</sup>) The meat figure for sheep and goat meat includes the meat from the municipality slaughterhouses, combines and the meat during Sacrifice Fest, TURKSAT. Figures for meat production is very low due to unregistered meat and meat products which mostly includes the meat produced and consumed to meet own needs of rural population. The meat production was calculated as 267,456 tons in 2002 and 210,073 tons in 2003 and 276,557 tons in 2004 (provisional) by Ministry of Agriculture and Rural Affairs (MARA).

(<sup>3</sup>) Figures obtained from MARA.

(<sup>4</sup>) Figures obtained from Undersecretariat for Foreign Trade (UFT).

## 2. Farm level

### Breeds of sheep:

- Are they predominantly meat breeds or is production more focused on wool or milk?

97 % of meat production is obtained from combined breeds that are reared for meat, wool and milk. The most common local sheep breeds are White Karaman (Akkaraman) (46 %), Red Karaman (Morkaraman) (19.6 %). The other local sheep breeds are Awasi (İvesi) (1.6 %), Karayaka, Dağlıc (Dağlıç) (15.5 %). Native goat breeds in Turkey are: Anatolian Black Goat (combined), Kilis Goat (for milk) and Angora Goat (for wool and meat).

Number of animals reared for milk	2002	2003	2004
Sheep	13,637,194	12,477,217	13,104,600
Goat	3,553,438	3,126,656	3,437,167

Source: MARA

- Where there is milk production are lambs fattened as heavy carcasses (minimum 25 kg) or are they marketed as light lambs?

In Turkey lambs over 12 kg aren't marketed. The lamb is suckled for 3 months then fattened and sold at 6 months old.

### Farm structure:

- What is the number of holdings engaged in sheep production?

Number of holdings engaged with animal husbandry	2001*
	<b>2,147,068</b>
The number of holdings engaged with both crop production and animal husbandry	2,074,439
The number of holdings engaged with only animal husbandry	72,629

2001*	
The number of holdings engaged with fattening of sheep and goats	40,428
The number of holdings engaged with milk production from sheep and goats	530,151

<b>Total agricultural holdings in Turkey 2001*</b>	<b>3,076,649</b>
--	------------------

\* TURKSTAT results of 2001 agriculture census, agricultural holdings (households) survey<sup>1</sup>.

---

<sup>1</sup> In Agricultural Holdings (Households) Survey the coverage is all agricultural holdings in the villages and in the centers of districts having less than 5,000 inhabitants and this survey is a sampling survey. The agricultural census is conducted every ten years. The next one will be conducted on 2011.

- **What is the size of such farms? (Average number of animals per holding)**

2001*	The number of holding	The number of sheep and goat	Average number of sheep and goat per holding
Holdings engaged with fattening of sheep and goats	40,428	2,754,990	68.15
Holdings engaged with milk production from sheep and goats	530,151	24,796,015	46.77

\* TURKSTAT results of 2001 agriculture census, agricultural holdings (households) survey.

- **Is sheep production concentrated in certain areas (Less Favoured Area type regions for example) or dispersed?**

Sheep breeding is mostly concentrated in the 6<sup>th</sup> agricultural region which is the southern-east of Turkey and the 26.3 % of the sheep population is bred in this region. The resting is dispersed throughout the country as transhumance production and some of the breeding regions are mountain areas that can be considered as Less Favoured Areas.

- **Are there farms that specialise in milk production?**

No there are no specialised farms according to the production type. Ovine animals are kept for their meat, wool and milk together and the number of animals that are given above.

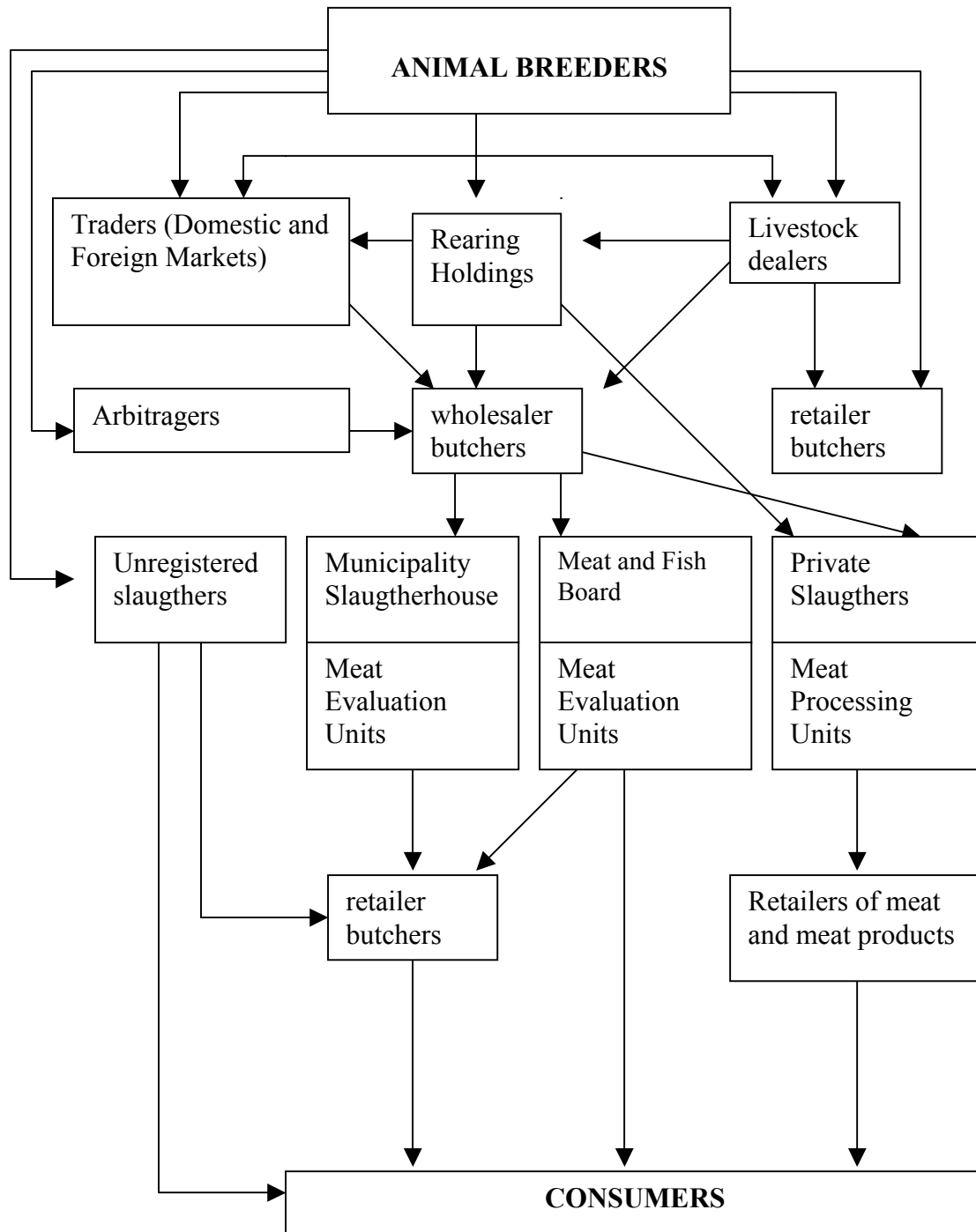
- **Is the identity of all farmers known?**

The identity of the farmers is not known. The legislation on the Identification and registration of ovine animals is drafted and the system will be established also for ovine animals.

### 3. Markets

- **How is the commerce organised? Are there live markets or direct purchases by slaughterhouses, or both? Is the live market privately organised or does the State play a role? Are slaughterhouses publicly owned, private or co-operatives (semi-public)? Do they purchase the meat and then market it or are they service slaughterhouses which slaughter animals for a fee?**

The purchases of live animals are made through animal markets owned by municipalities, animal commodity exchange departments. There are physical live animal markets and bourses for ovine animals and the purchases of animals can also be realized directly on the farms and slaughterhouses by traders. There are 47 authorized animal bourses and animal markets functioning 4 of which are private. The marketing channels are summarized at the chart below.



Source: Union of Turkish Chambers of Agriculture

The list of animal bourses and markets are listed below (Source: MARA):

1. Ankara Department of Commodity Exchange
2. Edirne Department of Commodity Exchange
3. Keşan Department of Commodity Exchange
4. İstanbul Department of Commodity Exchange
5. (İzmir) Tansaş Integrated Meat Facility and Animal Market
6. Bursa Department of Commodity Exchange
7. Kırşehir Department of Commodity Exchange
8. Live Animal Bourse of Elbistan Municipality
9. Elazığ Commodity Exchange (Live Animal Market)
10. Denizli Commodity Exchange (Live Animal Market)
11. Live Animal Market of Çorum İskilip Municipality
12. Live Animal Market of Konya Ilgın Municipality
13. Live Animal Market of Konya
14. Live Animal Market of Malatya Municipality
15. Animal Market of Kütahya Municipality
16. Animal Market of Kütahya Tavşanlı Municipality
17. Animal Market of Aydın Nazilli Municipality
18. Animal Market of Sivas Municipality
19. Animal Market of Gaziantep Municipality
20. Animal Market of Bolu Municipality
21. Animal Market of Tekirdağ Çorlu Municipality
22. Animal Market of Tekirdağ Hayranbolu Municipality
23. Animal Market of Osmaniye Municipality
24. Animal Market of Osmaniye Kadirli Municipality
25. Animal Market of Bolu Gerede Municipality
26. Animal Market of Bolu Mudurnu Municipality
27. Animal Market of İstanbul Küçüköğlü Municipality
28. Animal Market of Çorum Alaca Municipality
29. Animal Market of Düzce Center Municipality
30. Animal Market of İçel Hadi Doğan Municipality
31. Animal Market of Muğla Bayır Municipality
32. Animal Market of Denizli Çivril Municipality
33. Animal Market of Edirne Havza Municipality
34. Animal Market of Bartın Akçamescit Municipality
35. Animal Market of Kayseri Bünyan Municipality
36. Animal Market of Bilecik Bozhöyük Municipality
37. Animal Market of Kütahya Simav Municipality
38. Animal Market of Samsun Kavak Municipality
39. Animal Market of Samsun Asarcık Municipality
40. Animal Market of Samsun Havza Municipality
41. Animal Market of Samsun Kavak –Toptepe
42. Animal Market of Konya Cihanbeyli Municipality
43. Animal Market of Bartın Akçamescit
44. Animal Market of Bartın Apdipaşa Municipality
45. Animal Market of Aydın Municipality
46. Animal Market of Uşak Yaman Meat and Animal Husbandry Ltd.Co.
47. Animal Market of Adana Yüreğir Municipality

- Can a list be provided of the various markets/slaughterhouses, showing their relative importance in terms of throughput of lambs?

The List of 1<sup>st</sup> Class Facilities and Slaughterhouses

No	Slaughterhouses	Province	Sheep and goat daily capacity
1.	Pınar Et Entegre *	İzmir	1575
2.	AYTAÇ*	Çankırı	2000
3.	TUNA ET*	Adana	1000
4.	DERMAN ET*	Adana	2000
5.	MEAT and FISH BOARD	Adana	2200
6.	SAFTAT ET*	Adıyaman	500
7.	ALPTÜRK*	Afyon	100
8.	ÖZEL EFENDİOĞLU ET*	Afyon	200
9.	AĞRI ET*	Ağrı	500
10.	SLAUGHTERHOUSE of SULUOVA MUNICIPALITY	Amasya	200
11.	MISIRDALI ET*	Ankara	400
12.	KAZAN B. M. (Aygüler et)*	Ankara	200
13.	ATB*	Ankara	2200
14.	AL-ET*	Antalya	200
15.	AN-ET	Antalya	400
16.	SLAUGHTERHOUSE of MANAVGAT MUNICIPALITY	Antalya	75
17.	NAZİLLİ B.M.(Denen Gıda)*	Aydın	300
18.	SLAUGHTERHOUSE of AYDIN MUNICIPALITY	Aydın	150
19.	BALIKESİR B.M.(Sönmezler)*	Balıkesir	107
20.	DÖRT MEVSİM*	Balıkesir	300
21.	SLAUGHTERHOUSE of GÖBEL MUNICIPALITY	Balıkesir	300
22.	GÖNEN B.M.(Ayca Et)*	Balıkesir	20
23.	GÜRCAN ET*	Balıkesir	100
24.	SEVİLMİŞ ET*	Balıkesir	300
25.	SARIKIZ ET*	Balıkesir	195
26.	SLAUGHTERHOUSE of BİGADİÇ MUNICIPALITY	Balıkesir	50
27.	PAMUKÇU B.M.(Ölmezler Et)*	Balıkesir	60
28.	SLAUGHTERHOUSE of KEPSUT MUNICIPALITY	Balıkesir	60
29.	ERŞAN ET*	Bilecik	200
30.	MEAT and FISH PRODUCTS CORPORATION	Bingöl	2000
31.	TAT ET*	Bitlis	1000
32.	BURDUR GÜÇ BİRLİĞİ*	Burdur	1500
33.	EVREN ET*	Burdur	90
34.	BURSAM ET*	Bursa	2000
35.	ET-SA*	Bursa	100
36.	BURSA ET*	Bursa	1500
37.	SLAUGHTERHOUSE of AKÇALAR MUNICIPALITY	Bursa	400
38.	SLAUGHTERHOUSE of BİGA MUNICIPALITY	Çanakkale	30
39.	SLAUGHTERHOUSE of ÇANKIRI	Çankırı	400

	MUNICIPALITY		
40.	TARIM ET*	Çorum	200
41.	ÇORUM B.M.(Tarım Et)*	Çorum	200
42.	SLAUGHTERHOUSE of İSKİLİP MUNICIPALITY	Çorum	60
43.	ÖZÜİÇLİ ET BM*	Denizli	400
44.	MEAT and FISH PRODUCTS CORPORATION	Diyarbakır	2000
45.	GÜLER ET*	Diyarbakır	1500
46.	MAY ET*	Diyarbakır	600
47.	SLAUGHTERHOUSE of KEŞAN MUNICIPALITY	Edirne	100
48.	SLAUGHTERHOUSE of UZUNKÖPRÜ MUNICIPALITY	Edirne	50
49.	YENİGÜN ET*	Elazığ	1200
50.	EL ET*	Elazığ	400
51.	EĞİNLİOĞLU ET*	Erzincan	250
52.	SLAUGHTERHOUSE of ERZİNCAN MUNICIPALITY	Erzincan	150
53.	ERSAN ET*	Erzincan	200
54.	ÖZESAN ET*	Erzurum	1152
55.	MEAT and FISH PRODUCTS CORPORATION	Erzurum	2500
56.	ORAL ET*	Erzurum	2208
57.	ÇELİKLER GIDA*	Eskişehir	2200
58.	BİRLİK GIDA*	Eskişehir	200
59.	SLAUGHTERHOUSE of YEŞİLDERE MUNICIPALITY	Gaziantep	350
60.	GÖKTAŞLAR ET*	Gaziantep	400
61.	GAZİANTEP ET*	Gaziantep	1729
62.	SLAUGHTERHOUSE of OĞUZELİ MUNICIPALITY	Gaziantep	570
63.	OVAŞ ET*	Hakkari	150
64.	GÜLKÖY ET*	Isparta	150
65.	TAT KON.*	İstanbul	1800
66.	ENDER ET*	İstanbul	500
67.	ÇEKMECE ET*	İstanbul	2000
68.	SLAUGHTERHOUSE of İSTANBUL METROPOLITAN MUNICIPALITY	İstanbul	2000
69.	ÇOBAN ET*	İzmir	200
70.	TANSAŞ*	İzmir	7000
71.	KASTAMONU ET*	Kastamonu	2800
72.	SLAUGHTERHOUSE of DEVREKANİ MUNICIPALITY	Kastamonu	15
73.	İMAMOĞLU ET*	Kayseri	12
74.	TANÇ DERİCİLİK*	Kayseri	100
75.	DEVELİ B.M.(A. Ağca)*	Kayseri	40
76.	ÖZBAĞ ET*	Kırşehir	20
77.	İSTANBUL ET*	Kırşehir	200
78.	KİSMET ET*	Kırşehir	25
79.	KARPINAR ET*	Konya	400
80.	KONYA ET*	Konya	2000
81.	SEY ET*	Konya	150
82.	EBK(MERAM)*	Konya	1500
83.	ARVASI ET*	Konya	800
84.	ÖZGİRAY ET*	Konya	300
85.	ABAZLAR ET*	Konya	20

86.	KÜTAHYA ET*	Kütahya	200
87.	ŞİRİN ET*	Kütahya	20
88.	MALET*	Malatya	1800
89.	SLAUGHTERHOUSE of SALİHLİ MUNICIPALITY	Manisa	140
90.	SLAUGHTERHOUSE of TURGUTLU MUNICIPALITY	Manisa	300
91.	SLAUGHTERHOUSE of ELBİSTAN MUNICIPALITY	K.Maraş	24
92.	NEVŞEHİR GIDA*	Nevşehir	100
93.	SLAUGHTERHOUSE of ÜRGÜP MUNICIPALITY	Nevşehir	50
94.	SLAUGHTERHOUSE of AVANOS MUNICIPALITY	Nevşehir	17
95.	MEAT and FISH PRODUCTS CORPORATION	Sakarya	2000
96.	SAMES*	Samsun	80
97.	SIİRT ET*	Siirt	200
98.	4 EYLÜL ET*	Sivas	2000
99.	HAYROBOLU B.M.(Mahiroğlu Et)*	Tekirdağ	10
100.	SLAUGHTERHOUSE of TEKİRDAĞ MUNICIPALITY	Tekirdağ	400
101.	SLAUGHTERHOUSE of TURHAL MUNICIPALITY	Tokat	18
102.	SLAUGHTERHOUSE of ZİLE MUNICIPALITY	Tokat	250
103.	KADIOĞLU ET*	Tokat	30
104.	SLAUGHTERHOUSE of NİKSAR MUNICIPALITY	Tokat	150
105.	SLAUGHTERHOUSE of TRABZON MUNICIPALITY	Trabzon	35
106.	DEMET*	Ş. Urfa	500
107.	YAYLA AKAR*	Uşak	200
108.	MEAT and FISH PRODUCTS CORPORATION	Van	2000
109.	VANET*	Van	1250
110.	PINAR ANODOLU*	Yozgat	65
111.	BAŞAK ET*	Aksaray	1000
112.	SLAUGHTERHOUSE of AKSARAY MUNICIPALITY	Aksaray	100
113.	ORHAN AĞAÇLI ET*	Aksaray	100
114.	KLASS ET*	Karaman	50
115.	SLAUGHTERHOUSE of KARAMAN MUNICIPALITY	Karaman	40
116.	ARDAHAN ET*	Ardahan	400
117.	İŞLEROĞLU ET*	Osmaniye	250
118.	SLAUGHTERHOUSE of KADİRLİ MUNICIPALITY	Osmaniye	100
119.	SLAUGHTERHOUSE of DÜZCE MUNICIPALITY	Düzce	100
120.	BOLVADİN ET*	Afyon	200
121.	İBRAHİM MAZLUM*	Afyon	100
122.	KARAKOÇANLILAR ET*	Elazığ	158
	* Private Slaughthouses		

(Source: MARA)



Total Number of 1<sup>st</sup> class slaughterhouses is: 122, 37 of them belong to public sector. The total number of second class slaughter houses is 19. Amongst these slaughterhouses one of them belongs to private sector. This kind of slaughterhouse's capacity is equal to 320 ovine animal units. The total number of third class slaughter houses is 423, 8 of which belong to private sector. This kind of slaughterhouse's capacity is equal to 160 ovine animal units.

The total number of the all kind of slaughterhouses is 564. Public sector own 468 of these slaughterhouses.

#### **Consumption:**

- **Is lamb a traditional meat? Is the consumption concentrated at certain times of year (Easter or Christmas for example) or is demand steady throughout the year?**

Lamb is a traditional meat and the consumption rate increases during Sacrifice Fest. The demand is not steady through out the year, in spring period slaughtering of sheep increases.

- **Evolution of production and consumption: Have there been reductions or increases in production or consumption (in past 5 years)?**

Total supply increased 5 % in 2002, decreased 8 % in 2003. Total use increased 5 % 2002, and decreased 9 % in 2003 according to MARA.

#### **4. Slaughterhouses**

- **Are the slaughterhouses certified for export to the EU?**

The slaughterhouses aren't certificated for export to the EU.

- **Are there official personnel present in slaughterhouses (vets for example)?**

Official veterinarians are employed at the publicly owned slaughterhouses. For the private slaughterhouses officially authorized and accredited private veterinarians are contracted and paid by the government. The legal basis regarding authorized veterinarians is Communiqué on the Implementation of the support to private veterinarians that are working for the health production of meat at slaughterhouses and processing plants (No: 2005/26).

- **Is there a classification system for carcasses, based on the muscle conformation and fat cover?**

Yes. The classification was laid down by the TS 666, 667, 670, 671 of Turkish Standards Institute. The standard includes the definition of carcass, half carcass and quarter carcass and expressions like conformation, fat cover and the length of the carcass etc. used for the classification. The standards divide lamb, sheep, goat and capricorn carcasses into 4 classes (Extra, 1<sup>st</sup>, 2<sup>nd</sup> and 3<sup>rd</sup> class). The standard also includes sampling procedures. But the implementation of the standard is not compulsory.

- **Are storage facilities available (cold stores)?**

Cold stores facilities are available at the slaughterhouses.

#### **Collection of information**

- **Is a census of the number of animals regularly carried out?**

An animal census was carried out in 1984, from then, in the agricultural censuses conducted in every ten years, animals were also counted. The next agricultural census will be conducted on 2011. The identification and registration system will be established also for ovine animals.

- **Are statistics available for numbers and slaughterings? If so, on what basis? – Weekly, monthly...?**

The number of slaughterings and their carcass weight are collected via Province and District Directorates of MARA from the municipality slaughterhouses, combines and then the yearly meat production is obtained by adding the slaughterings during meat Sacrifice Fest. The data collection is on yearly basis.

- **Are production forecasts carried out?**

Production forecasts are carried out by MARA and published on yearly basis. Long term forecasts are also carried under the preparations for 5-year Development Plans.

- **Do the authorities monitor the prices on the markets?**

There is no price reporting system for the regulation of markets.

**5. Imports/Exports**

• **Are there import agreements with other countries?**

- **Other candidate countries?**
- **EU countries?**
- **Non-candidate countries (NZ, AUS etc.)?**

There is no preferential import arrangement of Turkey for import of sheep and goat meat.

• **With regard to imports, are there quotas in operation?**

No. Turkey has not a quota application for the said products.

**How are they managed? (Certificates of origin and import licences, for example).**

• **Are there exports to other countries?**

Export Destinations of products included in the CMO for goats and sheep	2002	2003	2004	2005 (Jan-Oct)
Lebanon	YES	YES	YES	
Germany	YES	YES	YES	YES
Bosnia Herzegovina	YES	YES	YES	YES
Iraq		YES	YES	YES
Kazakhstan			YES	YES
Malta	YES			
Czech Rep				YES
Russian Federation	YES			
Azerbaijan				YES
Serbia-Montenegro	YES			
Macedonia		YES		
UAE				YES
Other	YES	YES		YES

See Annex 1

Turkey has following preferential export arrangements for export of sheep and goat meat:

<b>THE EUROPEAN UNION</b> <b>(Turkey-EU Association Council Decision No 1/98)</b>				
<b>CN CODE</b>	<b>DESCRIPTION</b>	<b>QUOTA</b>	<b>DUTY</b>	<b>Specific provisions</b>
0204	Meat of sheep or goats	200 tons	0%	Above quota there is only ad-valorem exemption

**Other candidate countries?**

<b>TURKEY-CROATIA FREE TRADE AGREEMENT</b> <b>(Entered into force on 01.07.2003)</b>			
<b>CN CODE</b>	<b>DESCRIPTION</b>	<b>QUOTA</b>	<b>DUTY</b>
0204	Sheep and goat meat, fresh, chilled or frozen	100 tons	50% red MFN

**Non-candidate countries?**

<b>TURKEY-BOSNIA AND HERZEGOVINA FREE TRADE AGREEMENT</b> <b>(Entered into force on 01.07.2003)</b>			
<b>DESCRIPTION</b>	<b>QUOTA</b>	<b>DUTY</b>	
Sheep and goat meat		Unlimited	0

**Export Refunds:**

<b>CN Code</b>	<b>Final Outlay Commitment Level US\$</b>	<b>Final Quantity Commitment Level (t)</b>	<b>Current Situation</b>	
			<b>Refund Amount</b>	<b>Eligible Quantity</b>
0104 10 10	-	-	-	-
0104 10 30	-	-	-	-
0104 10 80	-	-	-	-
0104 20 10	-	-	-	-
0104 20 90	-	-	-	-
0206 80 99	-	-	-	-
0206 90 99	-	-	-	-
0210 99 21	-	-	-	-
0210 99 29	-	-	-	-
0210 99 60	-	-	-	-
1502 00 90	-	-	-	-
1602 90 72	17,145.60	68.80	-	-
1602 90 74			-	-
1602 90 76			-	-
1602 90 78			-	-

## **6. Support measures**

- **Are there any intervention mechanisms in operation, such as private or public storage?**
- **Are there any other State measures that the sector can benefit from (i.e. promotion)?**

There is neither support nor intervention mechanism applied for sheep and goat meat but direct support is granted for the milk obtained from ovine animals.

## Annex-1: Import and Export Figures

Imports		1998		1999		2000		2001		2002		2003		2004		2005 (Jan-Oct)	
		quantity	usd	quantity	usd	quantity	usd	quantity	usd	quantity	usd	quantity	usd	quantity	usd	quantity	usd
01041010	head							4,000	10,698								
	KG							4,000	10,698								
01041080	head	8	1,617	5,900	883,589												
	KG	460	1,617	303,480	883,589												
01042090	head					9	1,600										
	KG					201	1,600										
02041000	KG					40,030	3,203	20,204	112,298								
02043000	KG									1,000	3,322						
15020090	KG	49,868,801	8,613,144	9,218,787	5,588,520	15,336,404	6,823,468	5,584,454	1,761,884			448,833	205,805	980,047	467,482	36,000	39,657

Source: UFT

Exports of sheep and goats	1998		1999		2000		2001		2002		2003		2004		2005 (Jan-Oct)	
	kg	usd	kg	usd	kg	usd	kg	usd	kg	usd	kg	usd	kg	usd	kg	usd
France	7,844	34,208														
Germany	2,413	11,600			1,236	692			460	1,014	3,520	3,273	13,148	23,466	15,350	53,349
Finland			32,600	123,880												
Malta							173	369	80	319						
Czech Rep															25	240
Romania	393,121	220,172														
Ukraine			18,500	10,747												
Russian Federation									63	250						
Georgia	104	446														
Azerbaijan	14,000	5,740													106	282
Kazakhstan			3,895	13,947									70	572	1,944	19,395
Turkmenistan			26	233												
Uzbekhstan	180	1,625														
Bosnia Herzagovina									1,050	8,593	800	4,770	1,700	12,420	1,000	7,094
Serbia-Montenegro							3,656	17,803	2,401	11,591						
Macedonia											1,000	7,817				
Egypt					29,600	14,331										
Nothern Cyprus	2,700	3,123					835	2,106	420	798	2,700	20,640			25	107
Lebanon	32,050	6,919,600	1,487	188,979			454,840	33,929,102	320,712	26,710,036	30,496	3,232,953	22,980	2,668,280		
Iraq											121	1,623	1,100	5,253	19,959	146,367
Iran	813,000	487,689	900,025	450,982	51,053	31,908										
Saudi Arabia	170,722	32,841,106	53,698	9,213,595			16,349	1,832,669								
Kuweyt	26,986	5,053,646			163	13,011										
Bahreyn							478	40,488								
Qatar	3,798	505,400														
UAE					4,200	16,515	2,500	6,744							159	760
Pakistan			59,200	16,421												
Hong-Konk	4,156	4,613					100	317								
Australia					3	556										
unknown							120,173	1,104,798	837	2,750						
Aegean Free Zone			950	3,659	570	2,198									2,604	22,363
Menemen Free Zone	372	271														

EXPORTS		1998		1999		2000		2001		2002		2003		2004		2005 (Jan-Oct)	
		quantity	usd	quantity	usd	quantity	usd	quantity	usd	quantity	usd	quantity	usd	quantity	usd	quantity	usd
01041010	head	3,000	499,975			3	556										
	KG	142,850	499,975			100	556										
01041080	head	226,313	44,070,477	55,185	9,402,574	163	13,011	433,044	33,479,342	297,090	25,555,065	30,496	3,232,953	22,980	2,668,280		
	KG	12,803,132	44,070,477	2,854,240	9,402,574	9,840	13,011	22,809,200	33,479,342	16,577,170	25,555,065	1,854,600	3,232,953	1,300,860	2,668,280		
01042090	head	4,243	749,300					38,623	2,322,917	23,622	1,154,971						
	KG	257,000	749,300					2,226,290	2,322,917	1,078,880	1,154,971						
02041000	KG	1,767,065	7,617,570	1,275,740	5,416,904	1,014,000	4,058,110	258,480	1,365,215					13,000	17,100	1,741	11,809
02042100	KG							2,500	6,744	9,640	26,992						
02042290	KG			4,845	17,606	570	2,198	23	26			1,000	7,817			3,000	25,030
02042300	KG													40	163	202	455
02043000	KG	85,304	377,766	75,900	341,550	2,000	7,500	2,750	12,030	3,381	14,910			1,100	5,253	440	4,866
02044100	KG															15,152	108,858
02044250	KG	180	1,625													2,764	22,489
02044290	KG	16,344	76,708					639	1,517							1,200	13,429
02044310	KG							500	4,146								
02044390	KG	2,413	11,600					835	2,106	420	798	2,821	22,263			25	107
02045011	KG					500	1,875	39,200	465,051								
02069099	KG	6,856	7,736					406	1,627					10,605	30,755		
02109929	KG							484	1,108								
02109960	KG							20	52	460	1,014	3,520	3,273	13,148	23,466	15,350	53,349
15020090	KG	1,220,493	713,872	977,725	478,150	81,889	46,931	30	46							250	1,670
16029072	KG			26	233									30	409	48	801
16029076	KG									1,050	8,593	800	4,770	1,700	12,420	1,000	7,094

Source: UFT