



# Sheepmeat and goatmeat sector

Ave Schank

Market Officer, sheepmeat and goatmeat

# Overview of the EU25 market (2004 figures in cwe)

n Production: 1,058,000 tonnes

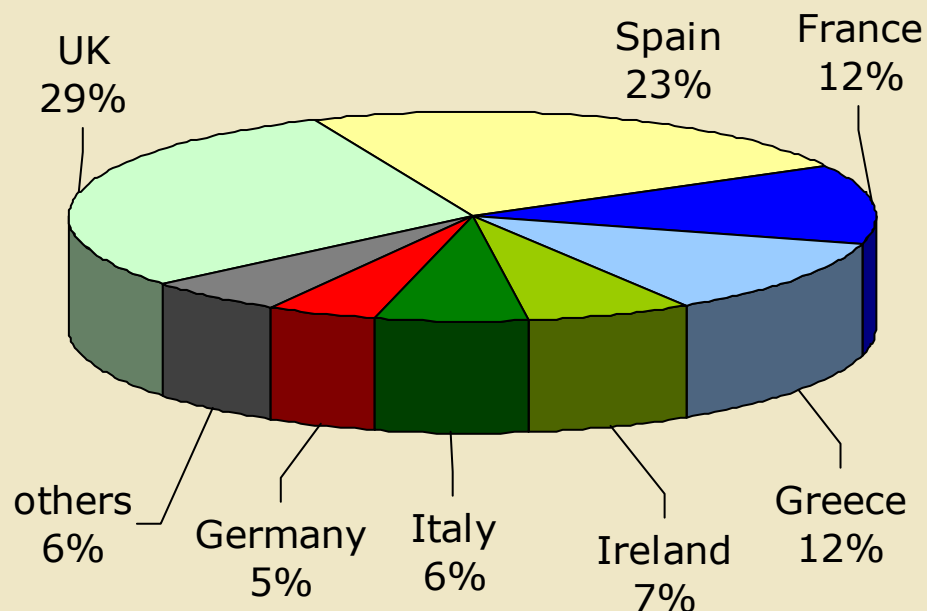
n Consumption: 1,298,000 tonnes

n Imports: 277,220 tonnes

n Exports: 30,120 tonnes

n Self-sufficiency: 79%

## Production of sheep and goat meat in 2004



# Common organisation of the market in sheepmeat and goatmeat

## **Council Regulation 2529/2001 of 19.12.2001**

### Internal market

Ewe and she-goat premium

Supplementary and additional payments

Private storage

Price communication and carcass grading

### Trade with third countries

Export and import licences

Tariff quotas and import duties



# Internal market (1): Premia

## Specified in Chapter 11 of Council Regulation 1782/03

- n MS can retain up to 50%
- n Ewe and goat premium. 21 EUR per ewe, 16.8 EUR per she-goat
- n Supplementary premium: paid in specific areas. Amount 7 EUR per ewe and she-goat
- n Ceilings, transfer of rights, national reserve
- n Control of premium claims covered by IACS (Integrated Administration and Control System) R.3508/92 and R.3887/92
- n Computerised data base
- n Administrative controls (at least 10% of claims)



# Internal Market (2): Private storage

## Commission Regulation 3446/90

- n Emergency measure
- n Amount given to private storage operators
- n Storage of meat between 3 months (minimum) and 7 months (maximum)
- n Price fixed in advance or by tendering



# Price communication

## Commission Regulation 461/93

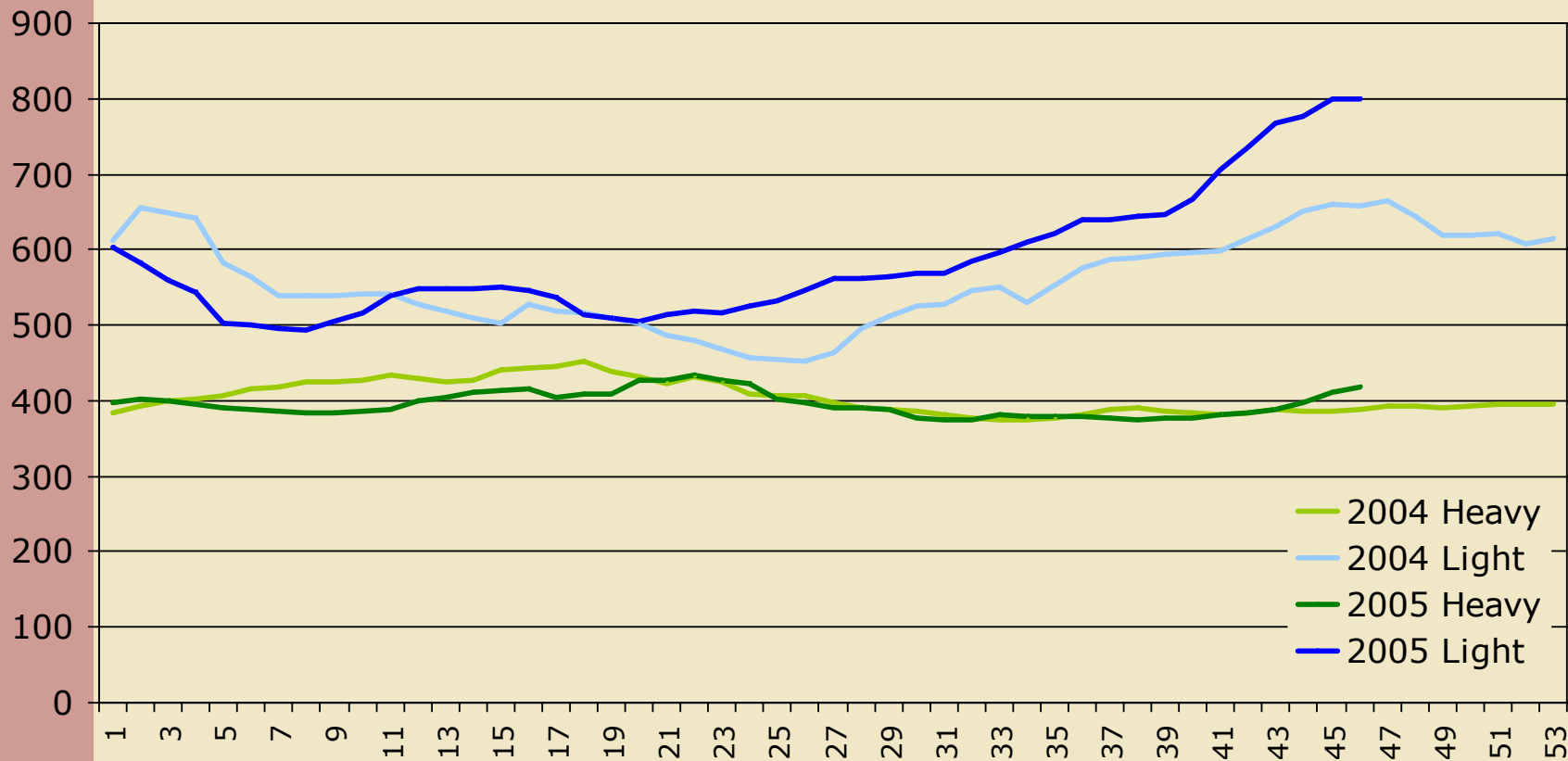
- n Weekly price reporting to the Commission from countries that produce more than 200 tonnes annually
- n Methodological document with calculation coefficients and definition of carcasses
- n Prices of heavy and light lamb carcasses

heavy: equal or more than 13.1 kg carcass weight

light: equal or less than 13.0 kg carcass weight

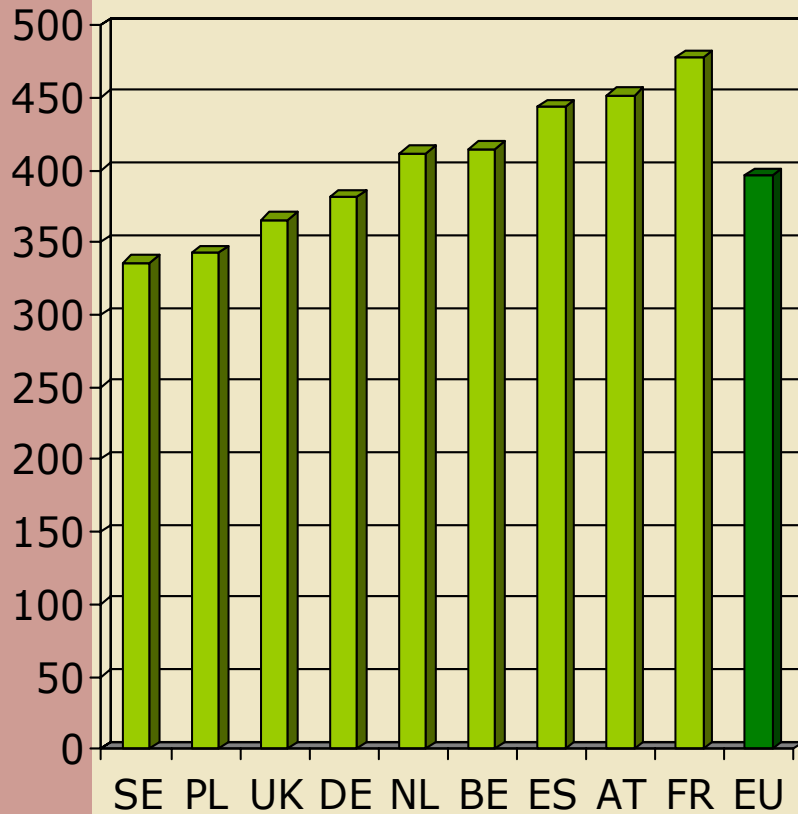


# Average weekly carcass prices, EUR/100kg

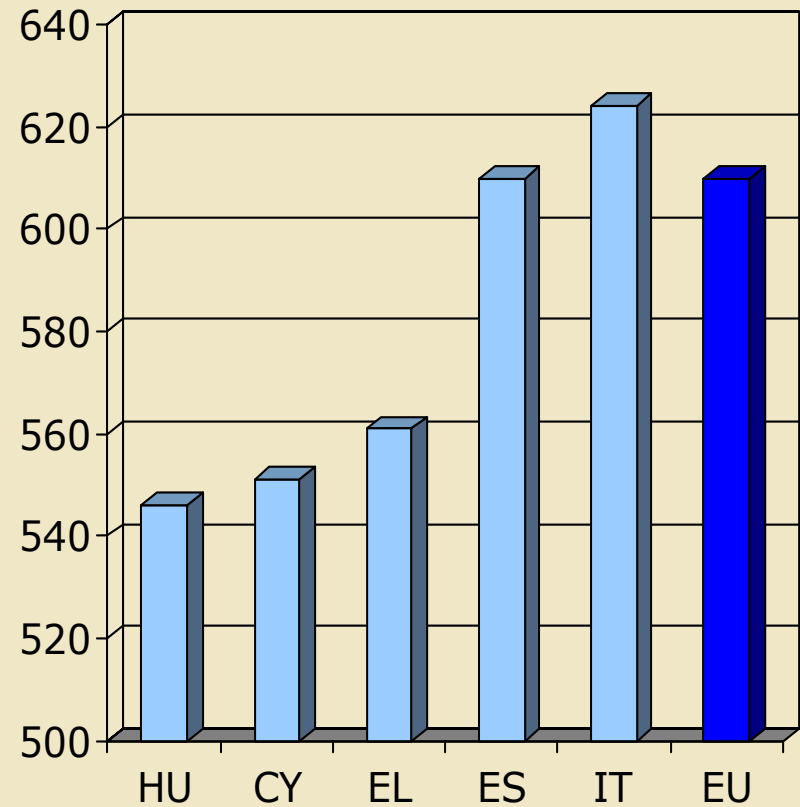


# 2005 average prices in Member States

## Heavy lamb



## Light lamb





# Carcase grading

## **Council Regulation 2137/92**

## **Commission Regulation 461/93**

n Voluntary in principle

n Standard quality:

Lamb carcasses from animals under 12 months old

Of acceptable fat level

Of at least 12 kg

n Classification grid:

SEUROP, Grid bis



# Identification and registration

## **Council Regulation 21/2004**

Means of identification: numbered ear-tags applied after birth, within 7 days if imported

Registers in each holding: farm code number incl. personal identity data of farmer

Movement documents: total number registered 15 March, births every 90 days, trade every 12 months

Central register or computer database



# Trade (1): Products covered

n	0104	Live sheep and goats
n	0204	Meat of sheep and goats, fresh, chilled or frozen
n	0206 80 99	Edible offal of sheep and
	0206 90 99	goats, fresh, chilled, frozen
	0210 90 60	salted, in brine, dried, smoked
n	ex 1502 00 90	Fats of sheep or goats
n	1602 90 72	Other prepared or
	1602 90 74	preserved meat or offal
	1602 90 76	of sheep and goats,
	1602 90 78	cooked, uncooked or mixtures



# Trade (2): Tariff Quotas (2005 quotas at zero duty in t cwe)

**Fixed annually, last time by Commission Regulation 2202/2004:**

n	New Zealand	226,700
n	Argentina	23,000
n	Australia	18,650
n	Uruguay	5,800
n	Chile	5,417
n	Iceland	1,350
n	ACP states	600
n	Norway	300
n	Turkey	200
n	Others	369



# Trade (3): Licences

- n “First come, first served” system
- n Regular notification by Member states (import licences) and by partner third countries (certificates of origin)
- n On-line database of quota utilisation administered by DG TAXUD

