

- **Laurent LOURDAIS – Unit C4 (animal products)**

- **Apiculture programmes:**
 - ❧ **Regulation (EC) n° 797/2004**
 - ❧ **Regulation (EC) n° 917/2004**

- **Directive relating to honey: (EC) n°2001/110**



EUROPEAN APICULTURE

APICULTURE PROGRAMMES

- **LEGISLATION**
 - ❧ **REGULATION (EC) N° 797/2004 Council**
 - ❧ **REGULATION (EC) N° 917/2004 Commission**

- **VOLONTARY BASIS**

- **3 YEARS PROGRAMMES**

- **COFINANCED 50%**

- **« Drawn up in close collaboration with the representative organisations and beekeeping cooperatives ».**



APICULTURE PROGRAMMES

- **STUDY OF THE PRODUCTION AND MARKETING STRUCTURE IN THE BEEKEEPING SECTOR: annex II**
 - ❧ **HIVES AND BEEKEEPERS**
 - ❧ **MARKETING STRUCTURES**
 - **PRODUCTION (kind of sales)**
 - **IMPORTS**
 - **EXPORTS**
 - ❧ **PRICES**
 - ❧ **PRODUCTION COST**
 - ❧ **HONEY QUALITY**



APICULTURE PROGRAMMES

- **3 Years period but 3 annual exercises:**
 - ❧ **Notification before 15 April of the first year of the 3 years period.**

 - ❧ **Annual exercise = 16 October to 15 October of the following year. (payments shall be carried out during the exercise).**

 - ❧ **Measures shall be entirely executed between 1 September and 31 August the following year.**



APICULTURE PROGRAMMES

- **National programmes shall:**
 - ❧ **Describe the situation in the sector;**
 - ❧ **State its aims;**
 - ❧ **Give a detailed description of the measures involved;**
 - ❧ **State the estimated costs and financing plan broken down yearly;**
 - ❧ **Refer to the applicable laws and regulations;**
 - ❧ **List the representative organizations and beekeeping co-operatives that collaborated;**
 - ❧ **Set up the monitoring and assessment arrangements.**



EUROPEAN APICULTURE

APICULTURE PROGRAMMES

- **EU BUDGET for the year 2004-2005: 23 Million €**

- **CO-FINANCED**
 - ❧ **Community part-financing: principle:**
 - restricted for each Member State to an amount corresponding to its share of the total number of beehives in the Community.

 - ❧ **Redistribution:**
 - If the amount of part-financing is not used by a Member State, the share of others may be increased in proportion of their share (before the programmes are voted)

- **Total Budget for 2004-2005: 46 Million €**

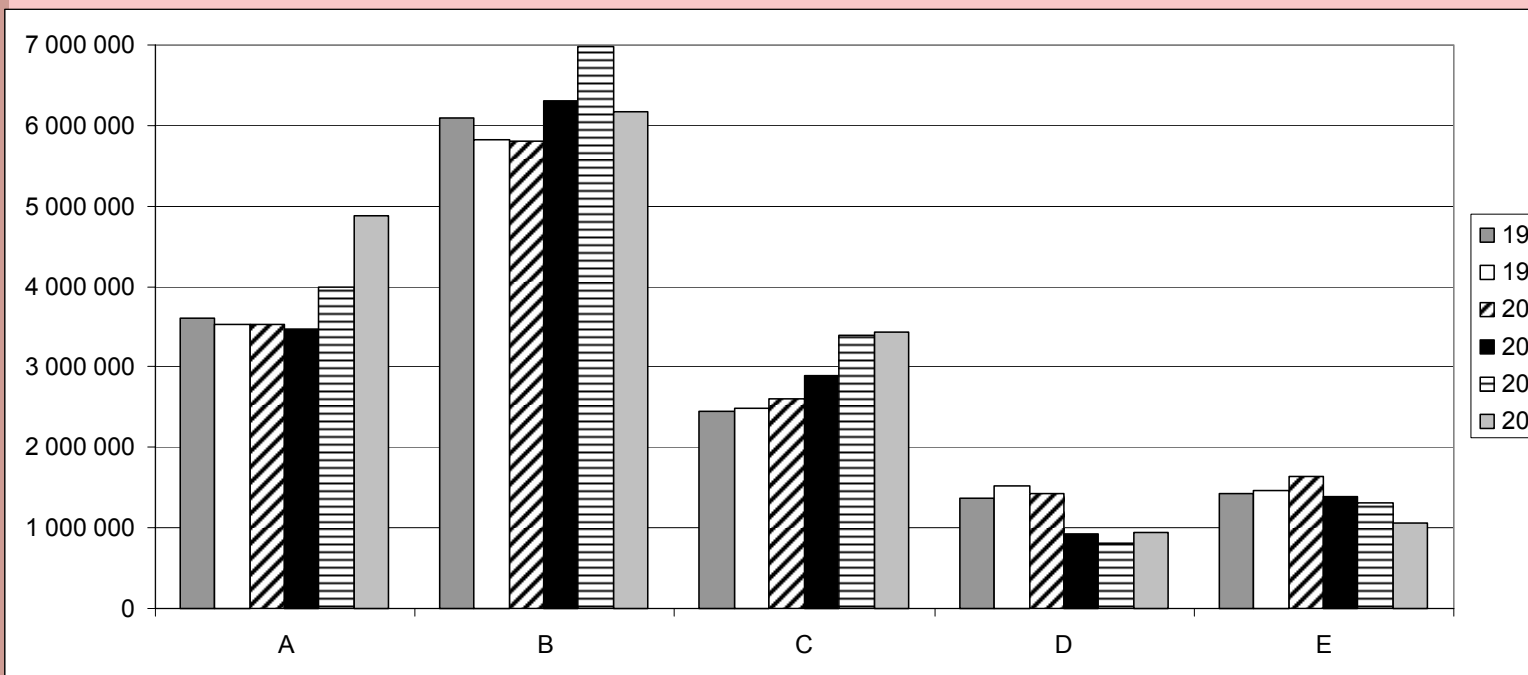


EUROPEAN APICULTURE

■ EXPENDITURES FORECAST

■ Previous Regulation n° 1221/97

(1998-2003)

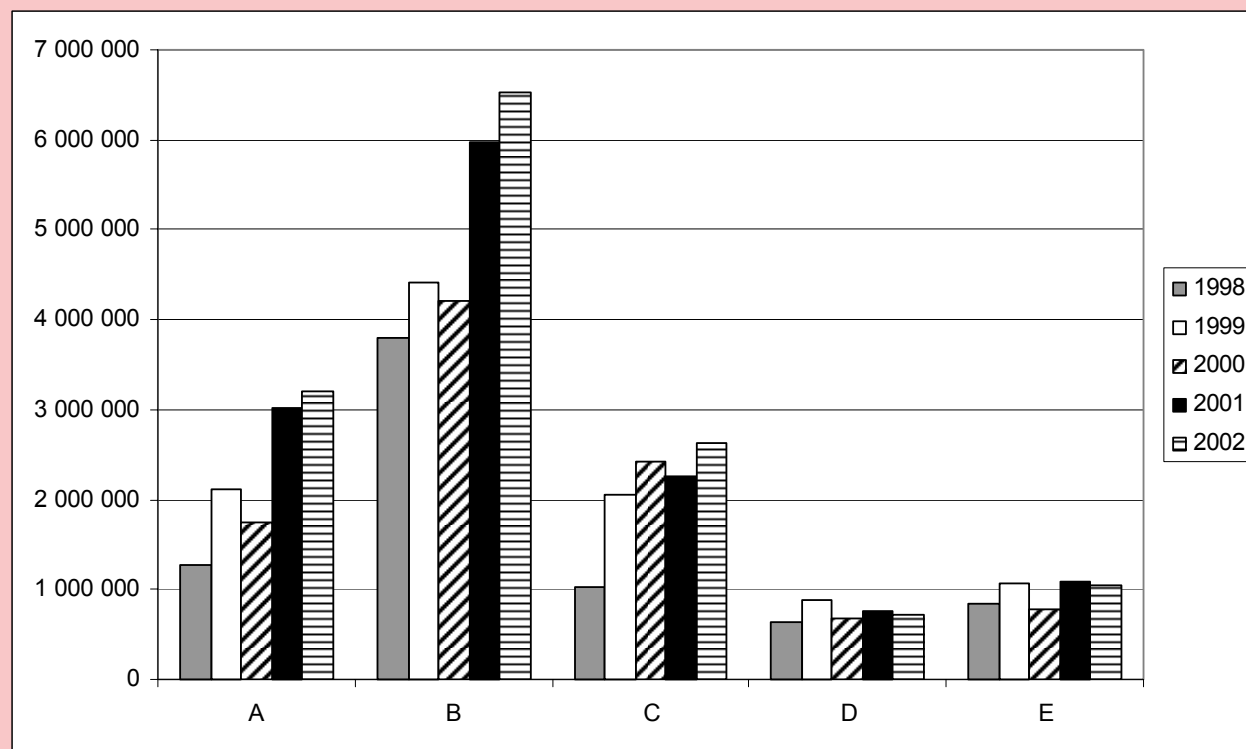


EUROPEAN APICULTURE

■ REAL EXPENDITURES

■ Previous Regulation n° 1221/97

(1998-2003)



APICULTURE PROGRAMMES

- **6 ELIGIBLE MEASURES: (Article 2 Reg. N° 797/2004)**
- **Expenditure forecast for the programme 2005**
 - ❧ **Technical assistance** **25.8 %**
 - ❧ **Control of varroasis** **35.4 %**
 - ❧ **Rationalisation of transhumance** **19.1 %**
 - ❧ **Support laboratories / analysis** **7.7 %**
 - ❧ **Restocking of hives (NEW)** **4.6 %**
 - ❧ **Applied research programmes** **7.1%**



APICULTURE PROGRAMMES

FLEXIBILITY:

- ↯ **Each measure may be increased or reduced by a maximum of 20% (overall ceiling is not exceeded)**
- ↯ **Adaptation are possible (Management Committee)**



EUROPEAN A P I C U L T U R E

Directive (EC) n°2001/110 (Labelling)

- **DEFINITION OF « HONEY »:**
 - ❧ « natural sweet substance produced by *Apis mellifera* bees »
 - ❧ « shall not have added to it any food ingredients, including food additives... »
 - ❧ See list of composition criteria (i.e. sugar and water content...)

- **The term « honey » shall be applied only to products defined as « honey ».**



EUROPEAN A P I C U L T U R E

Directive (EC) n°2001/110 (Labelling)

■ « Baker's honey »:

- ❏ Has a foreign taste or odour or,
 - ❏ Has begun to ferment or has fermented, or
 - ❏ Has been overheated
-
- ❏ must be labelled as « intended for cooking only »:



EUROPEAN A P I C U L T U R E

Directive (EC) n°2001/110 (Labelling)

■ HONEY ORIGIN:

- ⌘ **The country (ies) of origin where the honey has been harvested shall be indicated on the label.**

- ⌘ **If honey originates in more than Member State or third country, that indication may be replaced by:**
 - **« blend of EC honeys »**
 - **« blend of non-EC honeys »**
 - **« blend of EC and non-EC honeys ».**



EUROPEAN APICULTURE

■ Member States responsibility

- ❧ To control that imported and EC honey corresponds to all these requirements.
- ❧ To withdraw from the market any product which would contravene to the rules.

- ❧ **DEROGATION:**
 - Products labelled before 1 August 2004 (and not conform to the Directive) shall be permitted until stocks run out.



CONCLUSIONS

- **25 apiculture programmes:**
- **46 Million € (50% co-financed)**
- **Most frequently asked measures:**
 - ❧ **Varroasis control**
 - ❧ **Technical assistance**
 - ❧ **Restocking of hives**
- **Labelling rules to protect EU consumers and producers**

