



EUROPE  
&  
AGRICULTURE



European Commission  
Agriculture and  
Rural Development



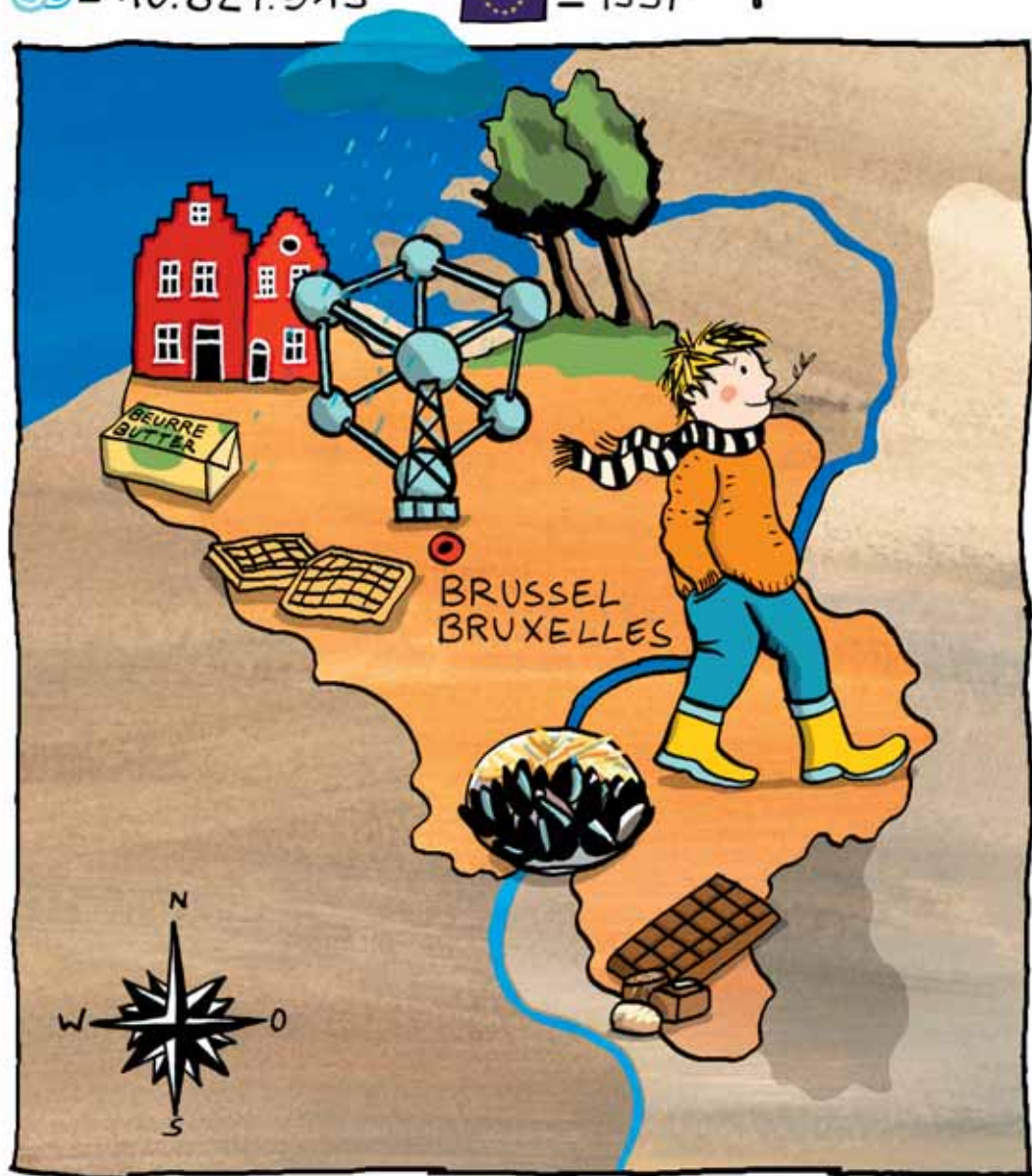
# BELGIË-BELGIQUE (BE)



# = 30.518 km<sup>2</sup>

😊😊 = 10.827.519


🇪🇺 = 1957



# БЪЛГАРИЯ (BG)

# = 110.550 km<sup>2</sup>

😊😊 = 7.576.751

 = 2007




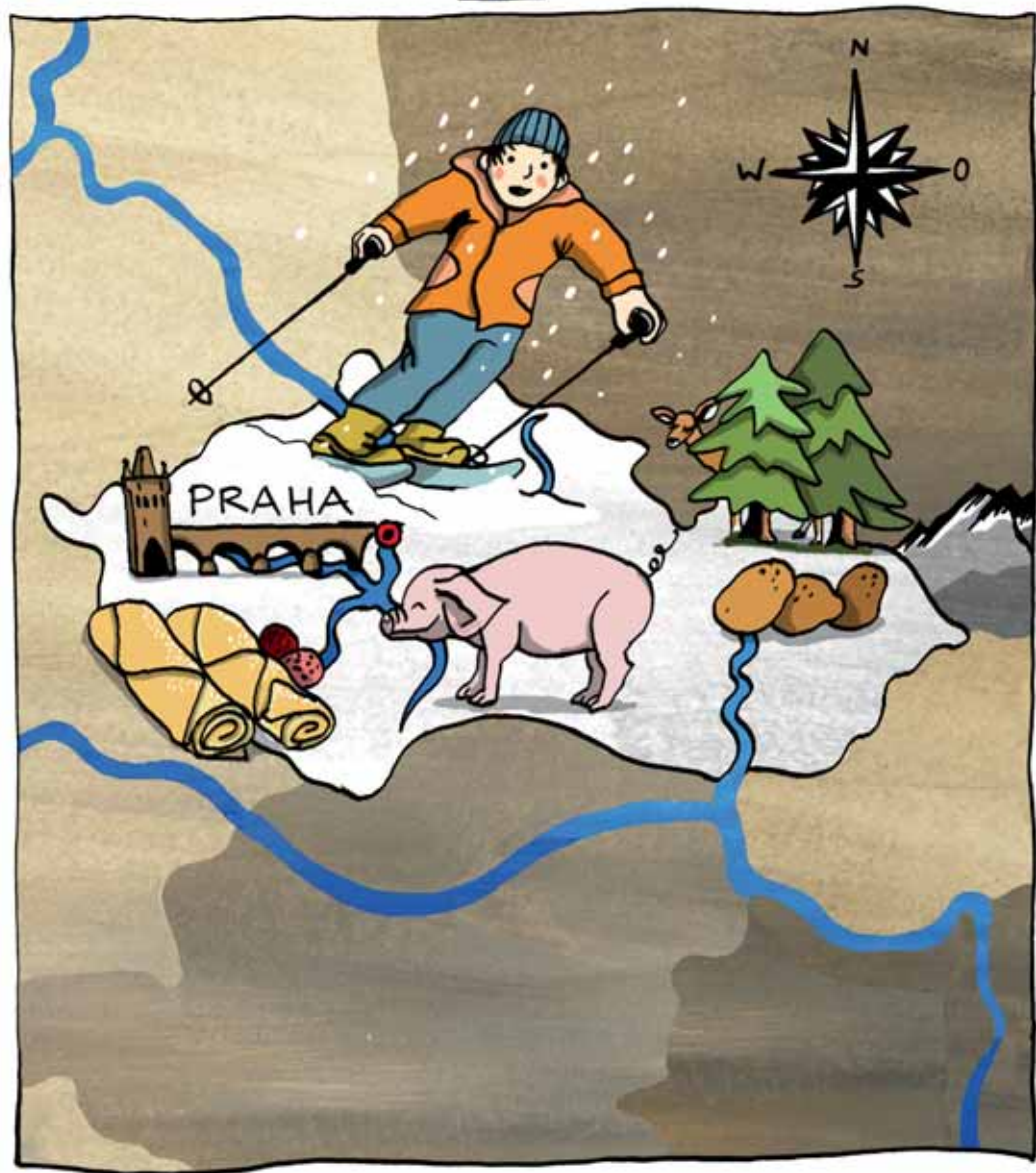
# ČESKÁ REPUBLIKA (CZ)



# = 78.859 km<sup>2</sup>

☺☺ = 10.512.397

 = 2004




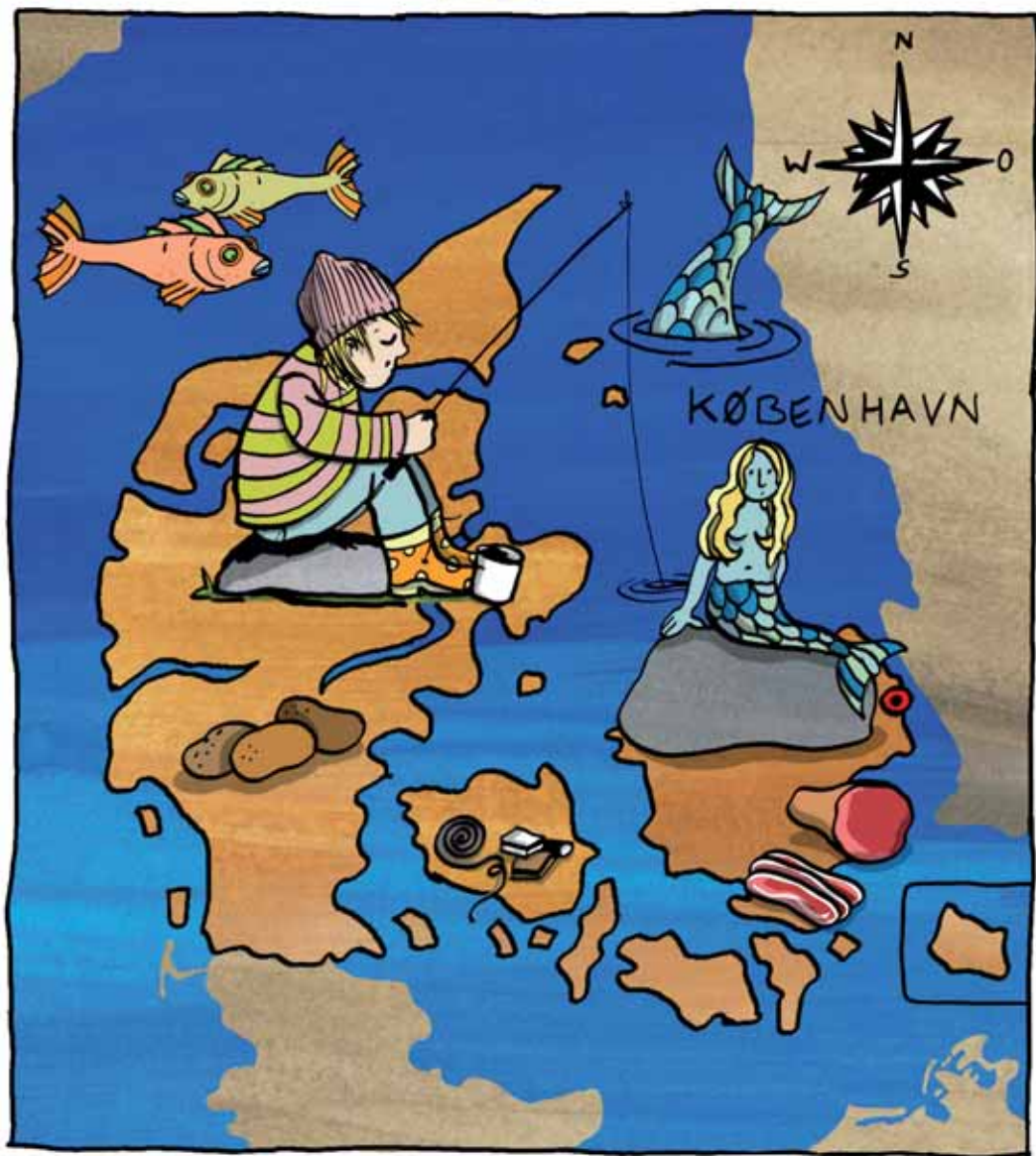
# DANMARK (DK)



# = 43.094 km<sup>2</sup>

😊😊 = 5.547.088

 = 1973



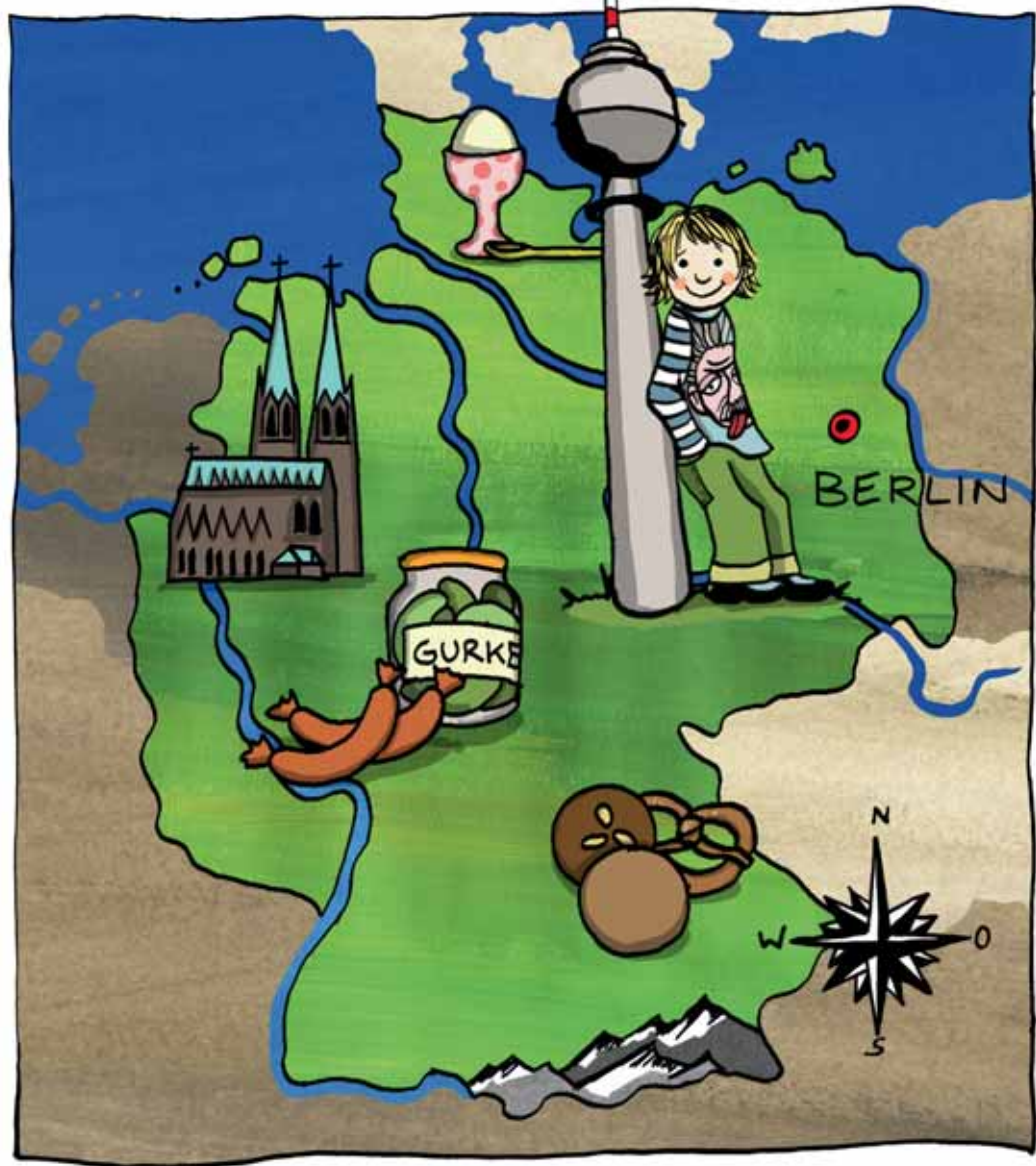
# DEUTSCHLAND (DE)



# = 357.020 km<sup>2</sup>

😊 = 81.757.595

🇪🇺 = 1957




EESTI (EE)



# = 43.211 km<sup>2</sup>

😊 = 1.340.274

 = 2004




# ÉIRE-IRELAND (IE)



# = 70.273 km<sup>2</sup>

😊😊 = 4.450.878

 = 1973





# ΕΛΛΑΔΑ-ELLADA (EL)

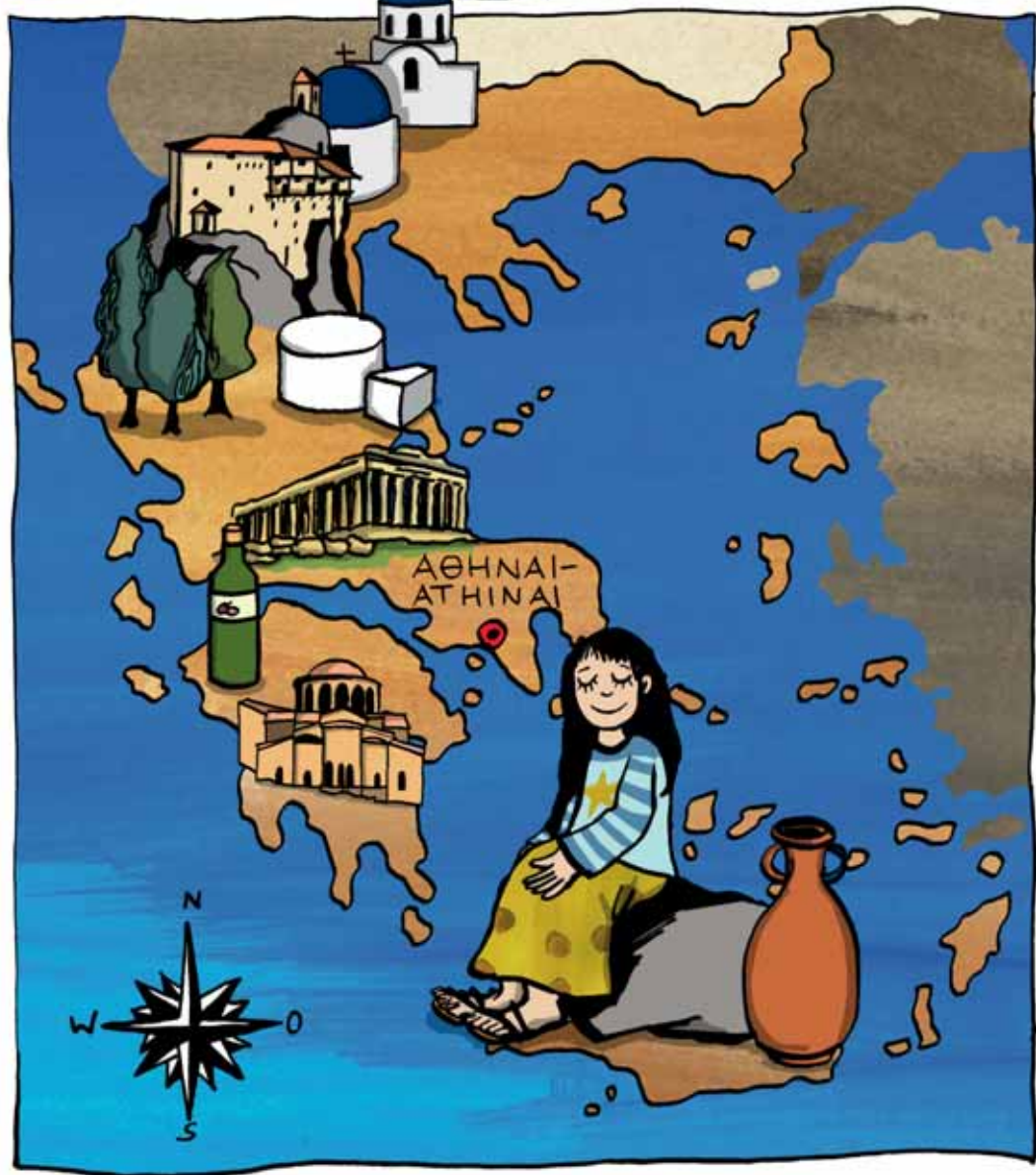


# = 131.625 km<sup>2</sup>

😊😊 = 11.306.183



=1981



# ESPAÑA (ES)



# = 504.790 Km<sup>2</sup>

😊 = 46.087.170


 = 1986

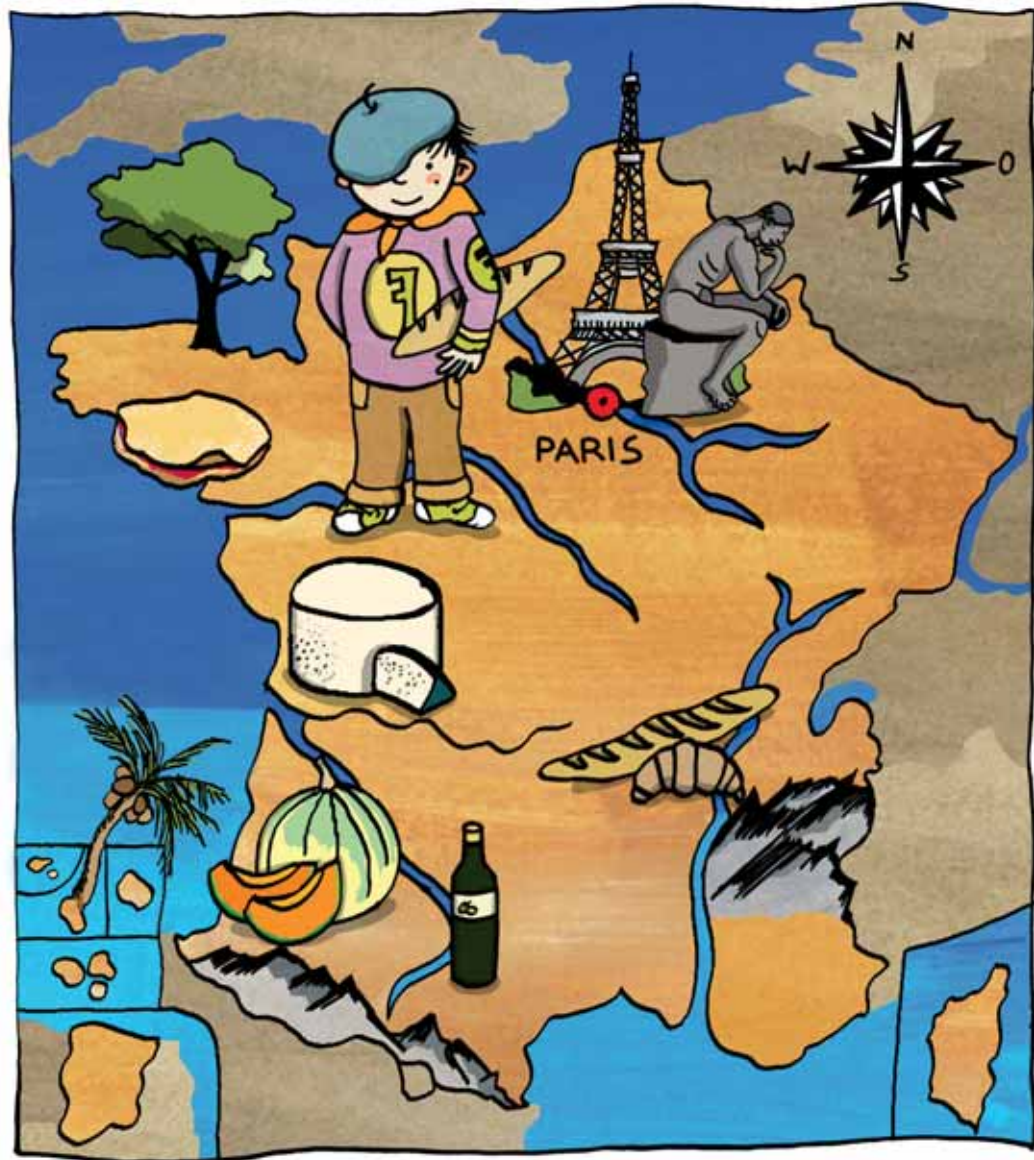
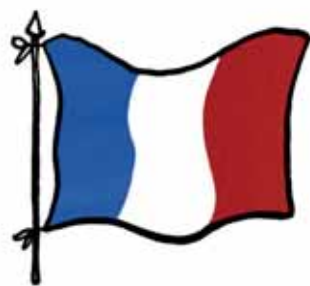


# FRANCE (FR)

# = 543.964 km<sup>2</sup>

😊 = 64.709.480

 = 1957




# ITALIA (IT)



# = 301.333 km<sup>2</sup>

☺ = 60.397.353


 = 1957



ΚΥΠΡΟΣ-ΚΥΠΡΟΣ-  
ΚΥΒΡΙΣ (cy)

# = 9.240 km<sup>2</sup>

😊😊 = 801.851

 = 2004




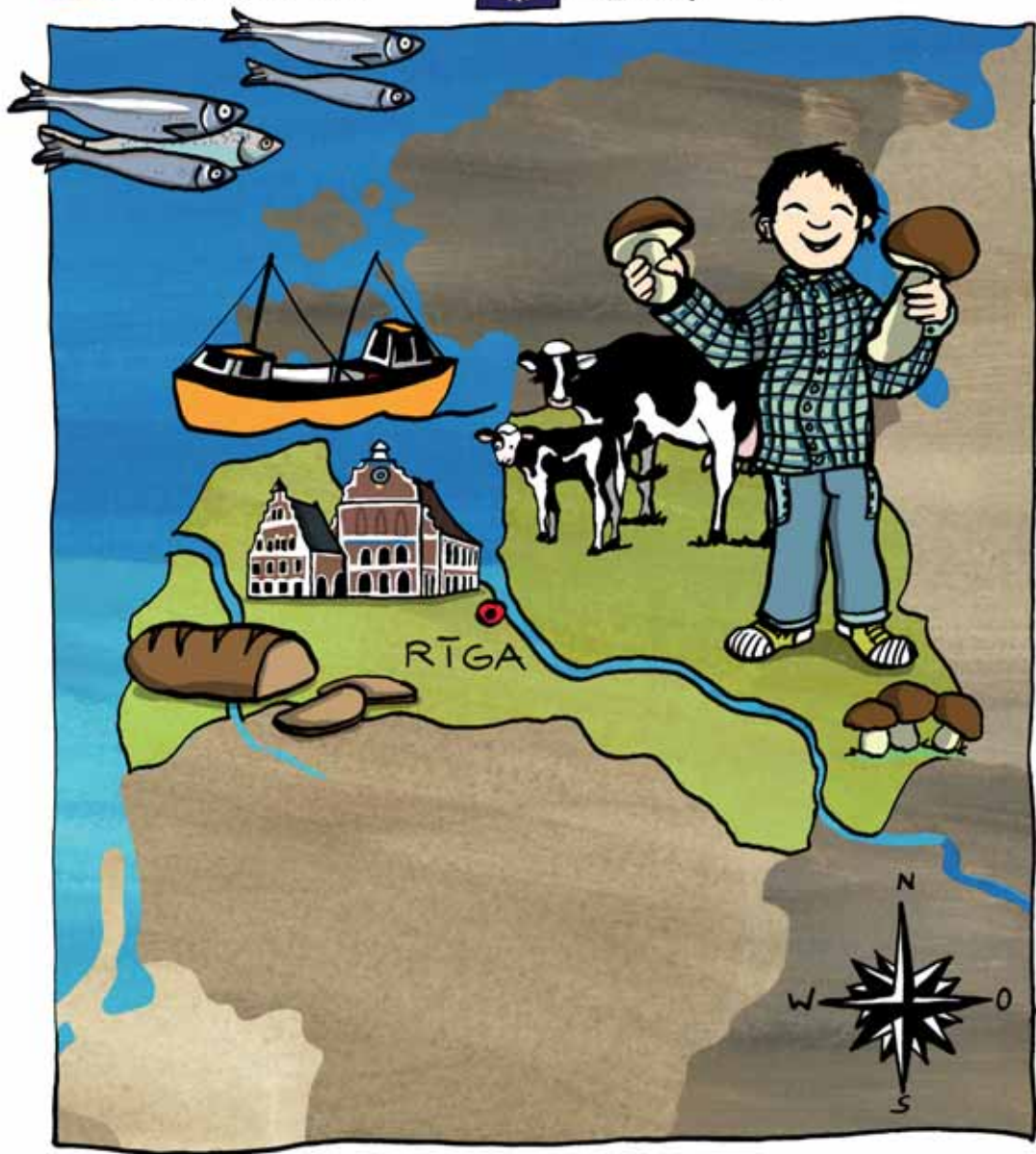
# LATVIJA (LV)



# = 64.589 km<sup>2</sup>

☺☺ = 2.248.961


 = 2004

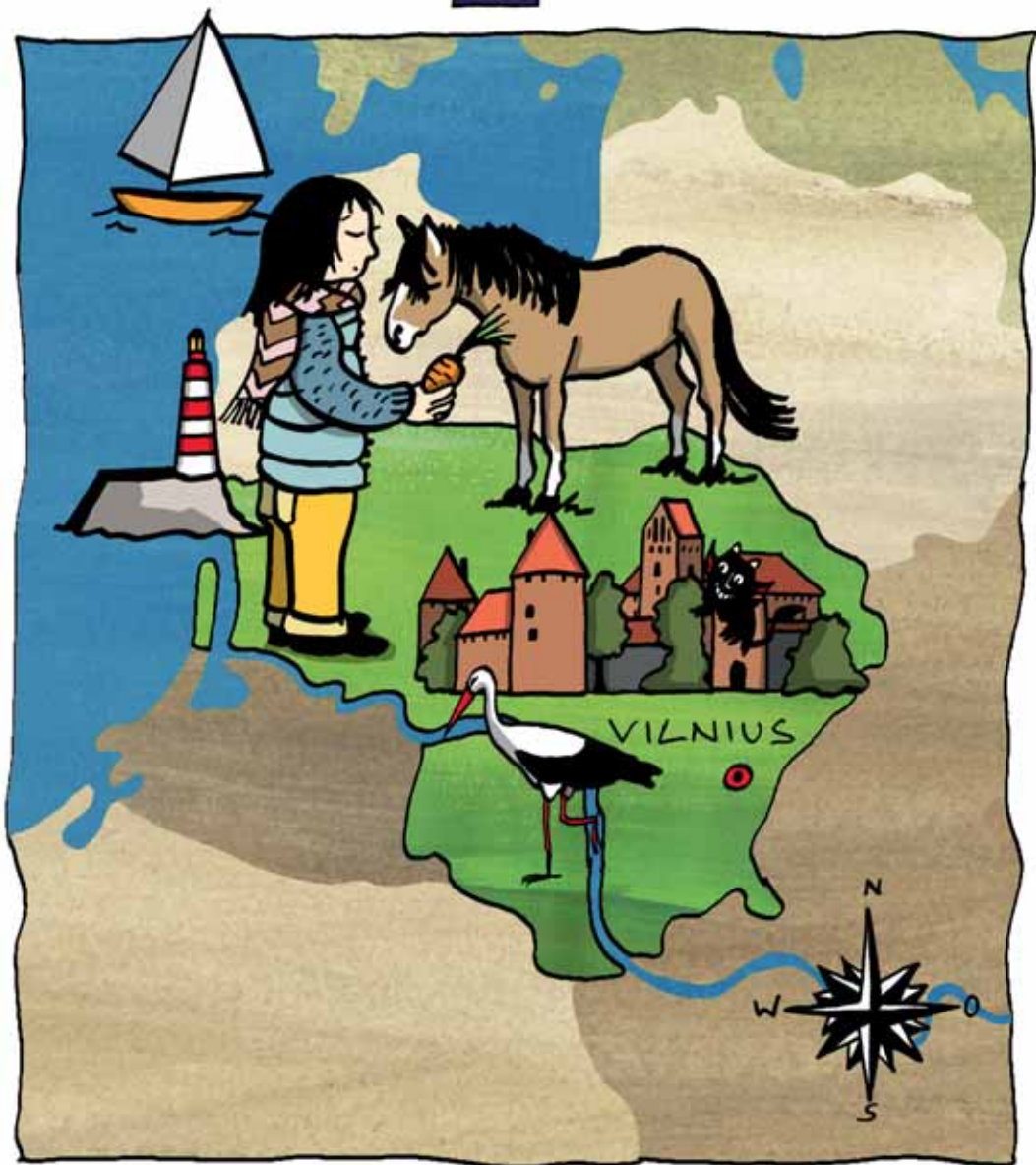


# LIETUVA (LT)

# = 65.300 km<sup>2</sup>

😊😊 = 3.329.227

 = 2004




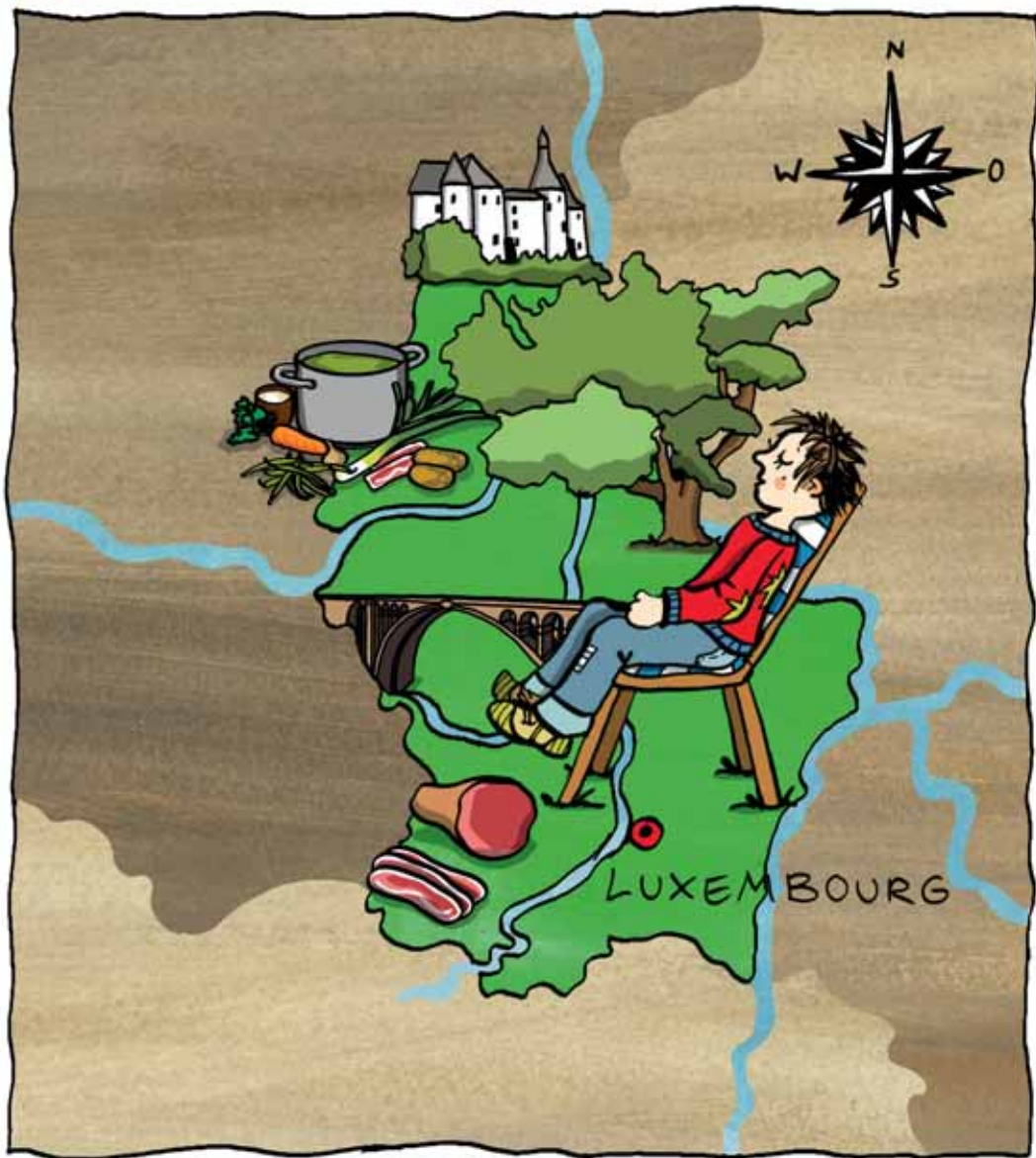
# LUXEMBOURG (LU)



# = 2.586 km<sup>2</sup>

😊😊 = 502.207

 = 1957






# MAGYARORSZÁG<sub>(HU)</sub>



# = 93.029 km<sup>2</sup>

☺☺ = 10.013.628


 = 2004

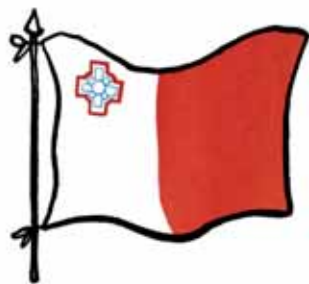


# MALTA (MT)

# = 316 km<sup>2</sup>

☺☺ = 416.333

 = 2004



# NEDERLAND(NL)



# = 33.873 km<sup>2</sup>

😊😊 = 16.576.800

🇪🇺 = 1957



# ÖSTERREICH(AT)

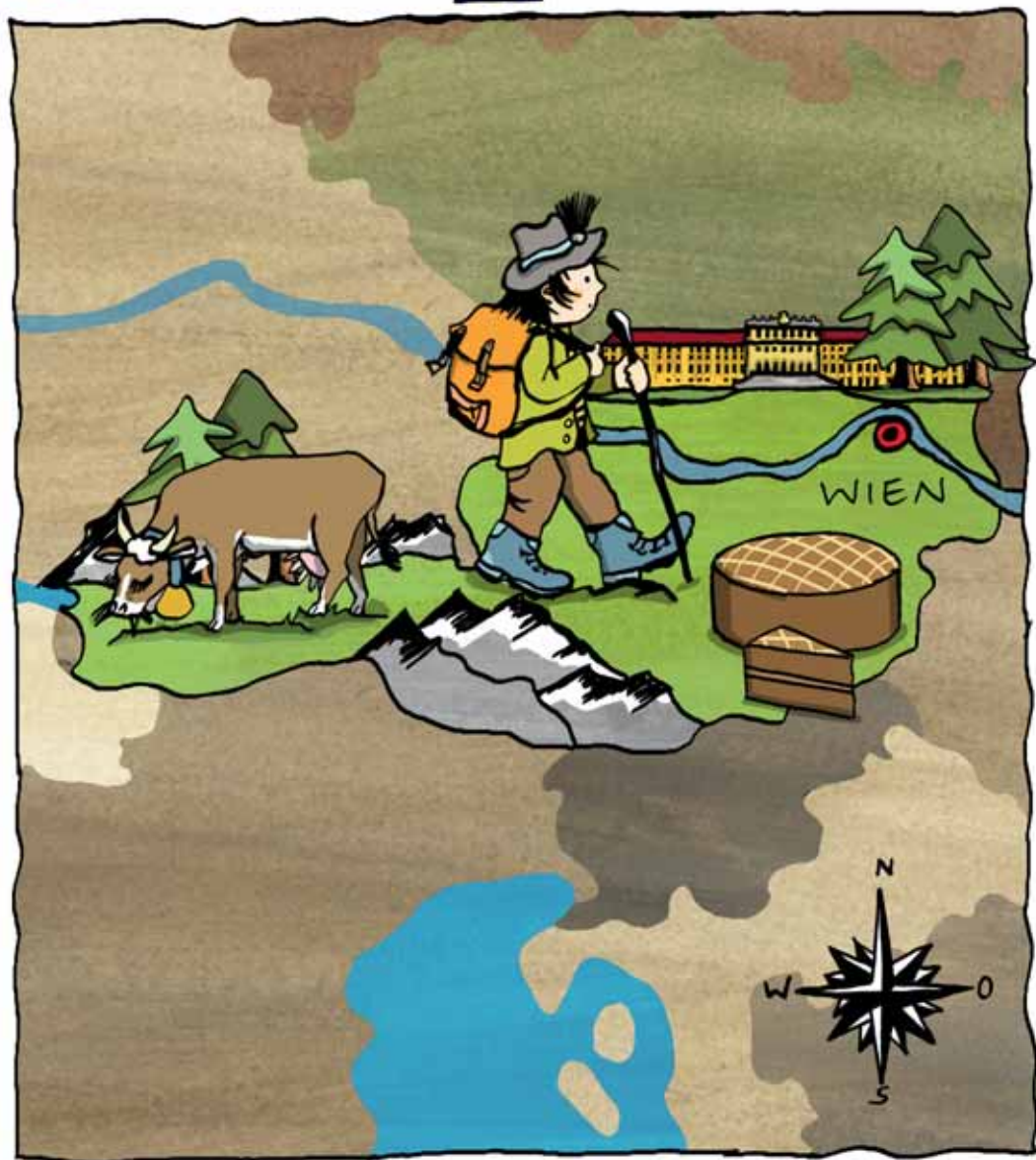


# = 83.859 km<sup>2</sup>

😊 = 8.372.930




= 1995

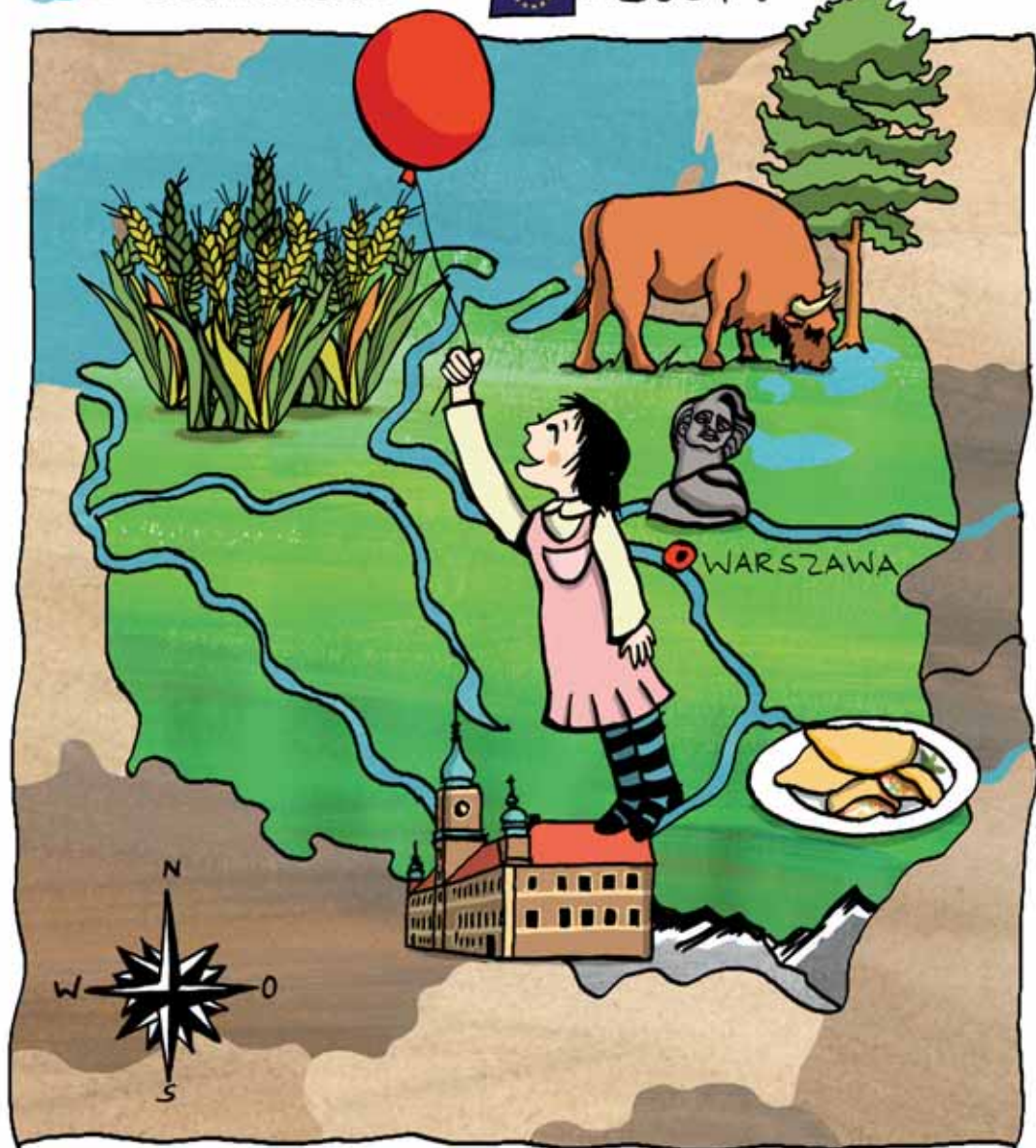


# POLSKA (PL)

# = 312.685 km<sup>2</sup>

☺☺ = 38.163.895

 = 2004



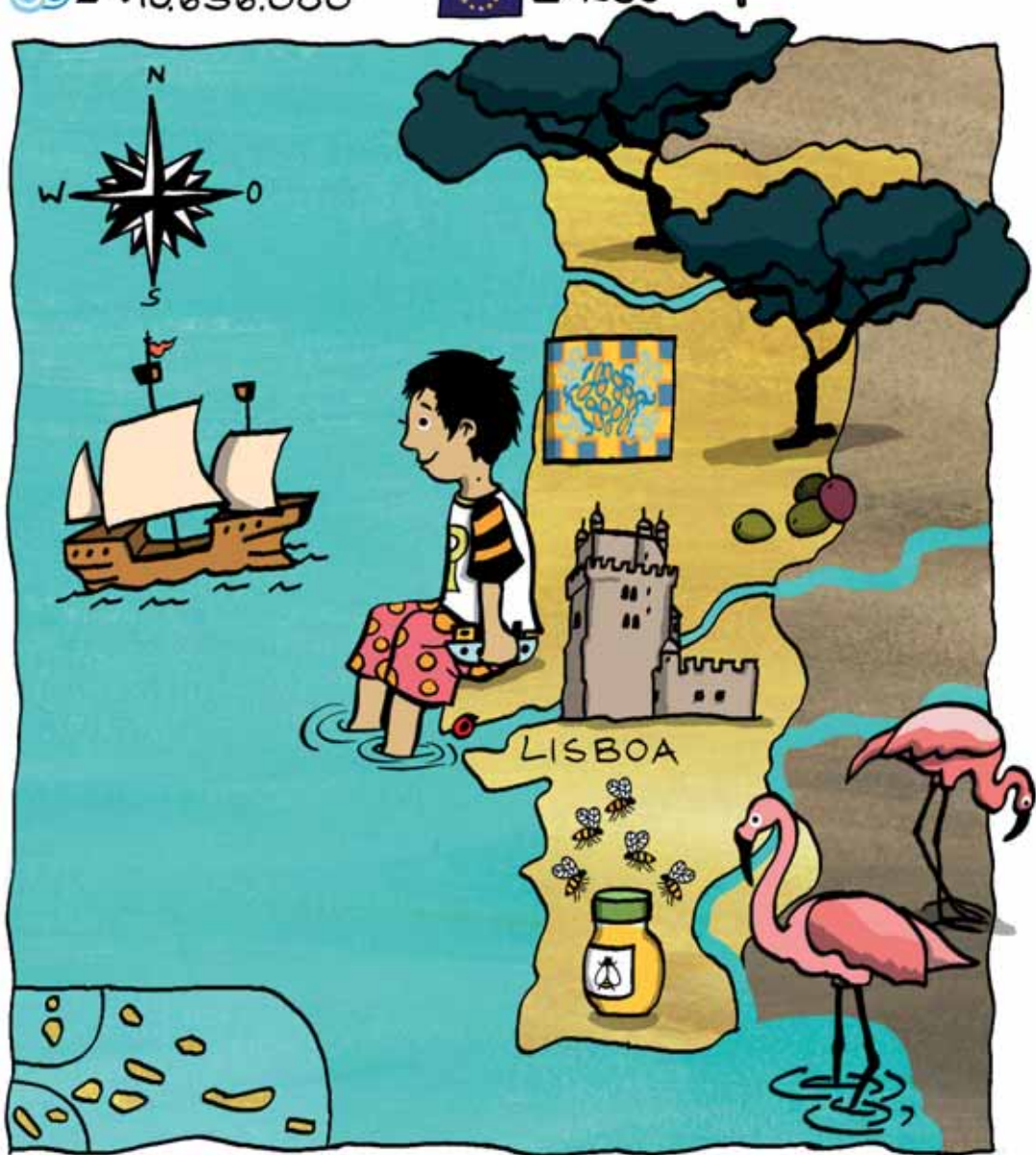
# PORTUGAL (PT)



# = 91.906 Km<sup>2</sup>

😊😊 = 10.636.888

 = 1986



# ROMÂNIA(RO)



# = 230.340 km<sup>2</sup>

😊😊 = 21.466.174




= 2007



# SLOVENIJA (SI)

# = 20.273 km<sup>2</sup>

😊😊 = 2.054.119

 = 2004





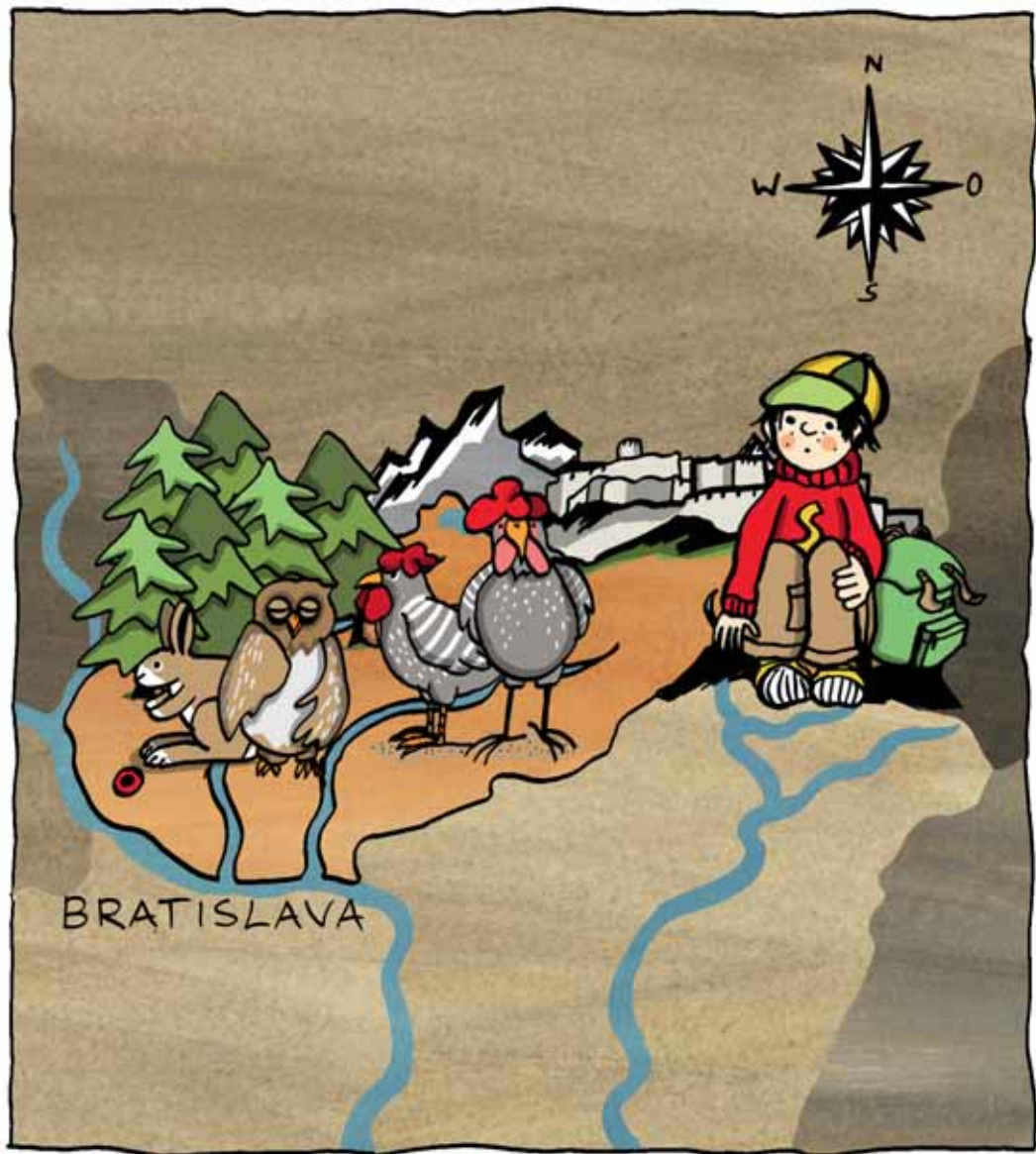
# SLOVENSKO (SK)



# = 49.035 km<sup>2</sup>

😊😊 = 5.424.057


🇪🇺 = 2004



# SUOMI-FINLAND (FI)

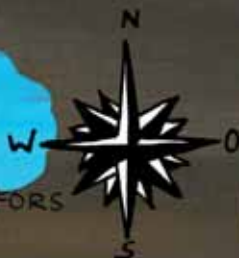
# = 304.529 km<sup>2</sup>

😊 = 5.350.475

 = 1995



HELSINKI-HELSINGFORS



# SVERIGE (SE)



# = 410.934 km<sup>2</sup>

☺☺ = 9.347.899

 = 1995



# UNITED KINGDOM(UK)



# = 243.820 km<sup>2</sup>

😊😊 = 62.041.708



= 1973







Говеда – Hovézi dobytek – Kødkvæg – Rinder – Βοοειδή – Beef cattle – Vacuno – Lihakarjakasvatus – Lihakarja – Bovins – Húsmarha – Bovini – Mėsiniai galvijai – Gaļas liellopi – Baqar – Runderen – Bydło – Bovinos – Bovine – Hovädzi dobytok – Govedo – Biffkor



Зърнени култури – Obiloviny – Korn – Getreide – Σιτηρά – Cereals – Cereales – Viljakasvatus – Viljanviljely – Céréales – Gabona – Cereali – Javai – Graudaugi – Cereali – Graangewassen – Zboža – Cereais – Cereale – Obilniny – Žita – Spannmål



Млекодайни животни – Dojnice – Malkekvæg – Milchvieh – Γαλακτοπαραγωγή ζώα – Dairy cattle – Cabaña lechera – Piimakarjakasvatus – Lypsykarja – Cheptel laitier – Tejelő szarvasmarha – Bestiame da latte – Pieniniai galvijai – Piena liellopi – Baqar tal-ħalib – Melkvee – Stado mleczne – Gado leiteiro – Efective de vaci de lapte – Dojnice – Krave molznice – Mjölkkor



Северни елени – Soby – Renner – Rentiere – Τάρανδοι – Reindeer – Reno – Põhjarõdrakasvatus – Poronhoito – Rennes – Rénszarvas – Renne – Šiaurės elniai – Ziemeļbrieži – Renni – Rendieren – Renifery – Renas – Reni – Soby – Severni jeleni – Renar



Плодове – Ovoce – Frugt – Obst – Φρούτα – Fruit – Frutales – Puuviljakasvatus – Hedelmät – Fruits – Gyümölcs – Frutta – Vaisiai – Augļi – Frott – Fruit – Owoce – Frutos – Fructe – Ovocie – Sadje – Frukt



Градинарство – Zahradnictví – Havebrug – Gartenbau (Gemüse, Blumen) – Λαχανικά – Horticulture (vegetables, flowers) – Horticultura – Lillekasvatus – Puutarhatalous (vihannekset, kukat) – Horticulture – Kertészet (zöldség, virág) – Ortaggi – Sodininkystė (daržovės, gėlės) – Dārzeni un ziedi – Ortikultura – Tuinbouw – Ogrodnictwo – Horticultura – Horticultură – Zelenina, kvety – Vrtnine – Trädgårdsnäring (grönsaker, blommor)









Μαслини – Olivy – Oliven – Oliven/Olivenöl – Ελαιόδενδρα – Olives / olive oil – Olivo – Oliivikasvatus – Oliivipuut/oliiviöljy – Olives – Oliva / olivaolaj – Olive – Alyvuogės (alyvuogių aliejus) – Olīvas – Žebbuġ – Oljiven – Oliwki – Azeitonas – Mäslīne – Olivy – Oljke – Oliver / olivolja



Свинe – Prasata – Svin – Schweine – Χοιροειδή – Pigs – Porcino – Seakasvatus – Sikatalous – Porcins – Sertés – Suini – Kiaulės – Cūkas – Ħnieżer – Varkens – Trzoda chlewna – Suínos – Porcine – Bravčový dobytok – Prašiči – Svin



Домашни птици – Drūbež – Fjerkræ – Geflügel/Eier – Πουλερικά – Poultry / eggs – Aves de corral – Linnukasvatus – Siipikarja/kananmunat – Volaille – Baromfi / tojás – Pollame – Naminiai paukščiai (kiaušiniai) – Mājputni – Tjur – Gevogelte – Drób – Aves de capoeira – Päsäri – Hydina – Perutnina – Fjårdefä / ägg



Овце и кози – Ovce a kozy – Får og geder – Schafe und Ziegen – Αιγοπρόβατα – Sheep and goats – Ovino y caprino – Lamba-ja kitsekasvatus – Lampaan- ja vuohenhoito – Ovins et caprins – Juh és kecske – Ovini e caprini – Avys ir ožkos – Aitas un kazas – Nagħaġ u mogħoż – Schapen en geiten – Owce i kozy – Ovinos e caprinos – Ovine și caprine – Ovce a kozy – Ovce in koze – Får och getter



Захарно цвекло – Cukrová řepa – Sukkerroer – Zucker – Ζαχαρότευτλα – Sugar – Remolacha azucarera – Suhkruppeedikasvatus – Sokerijuurikkaan viljely – Betteraves sucrières – Cukorrépa – Barbabietole da zucchero – Cukriniai runkeliai – Cukurbietes – Pitravi taz-zokkor – Suikerbieten – Buraki cukrowe – Beterraba açucareira – Sfeclă de zahăr – Cukrová řepa – Sladkorna pesa – Socker



Вино – Víno – Vin – Wein – Αμπέλια – Vineyard – Vid – Viinamarjakasvatus – Viininviljely – Vin – Szőlő – Vīno – Vynas – Vinogas – Inbid – Wijn – Winogrona – Vinho – Vin – Víno – Vīno – Vinodling



# = 4.231.551 km<sup>2</sup>

😊😊 = 501.259.840







<http://ec.europa.eu/agriculture>

**Editor**

European Commission  
Directorate-General for  
Agriculture and Rural Development  
Rue de la Loi 200  
1049 Brussels, Belgium

**Concept and Layout**

MEDIA CONSULTA  
International Holding AG  
Wassergasse 3  
10179 Berlin, Germany

**Illustration**

Iris Wolfermann



Publications Office



doi:10.2762/19570

ISBN 978-92-79-17120-8



9 789279 171208